

InterApp Company, Products digital twin

Komplexe Variantenvielfalt – Konfigurator und Cadenas als Power Duo



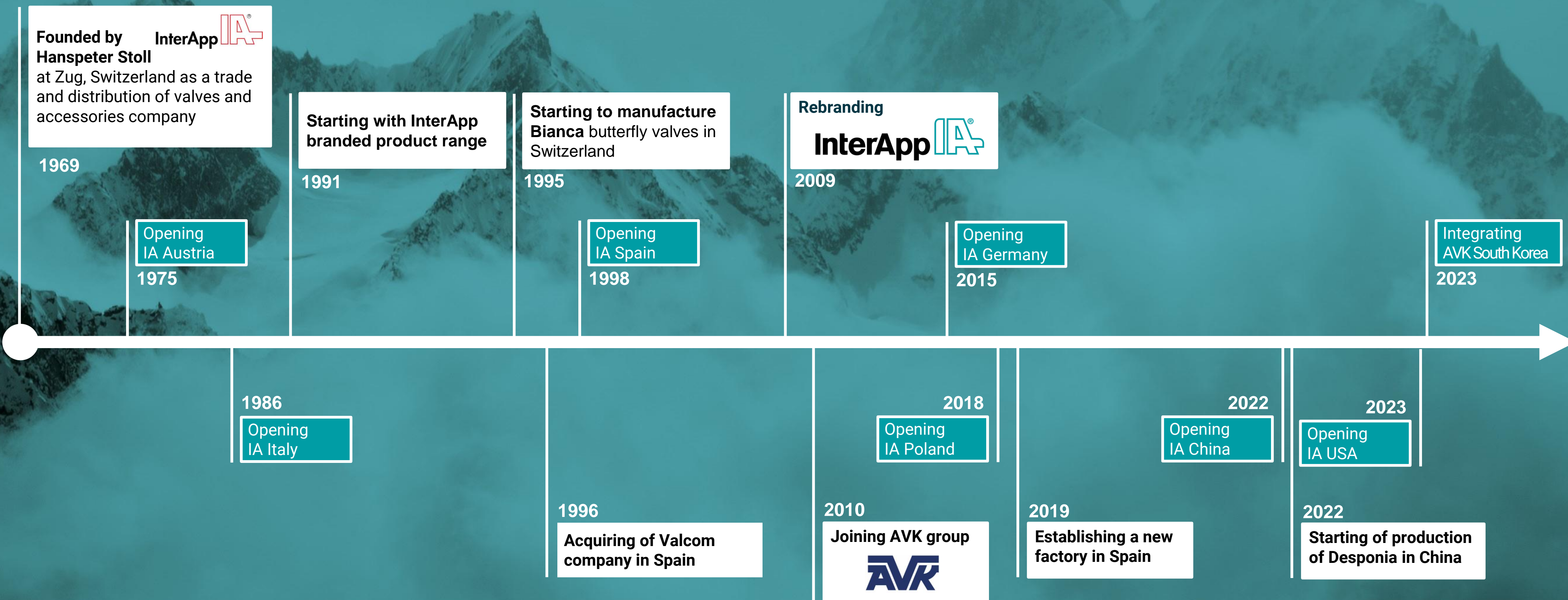
InterApp company, products digital twin

Content

- About InterApp
- Product solutions
- Configuration
- Cadenas
- CAD 2 Customer
- Configuration + Cadenas = 3



InterApp at a glance



About InterApp

3 manufacturing sites

- Switzerland
- Spain
- China



About InterApp

Manufacturing site Switzerland

- Manufacturing site of PTFE-lined butterfly valves Bianca
- Competence center in PFA-overmoulding
- Production of high purity valves in clean room ISO class 7



About InterApp

Manufacturing site Spain

- Manufacturing site of elastomer-lined butterfly valves Aquaria plus, Desponia and Desponia plus
- Production in clean room LABS-free



About InterApp

Manufacturing site China

- Manufacturing site of elastomer-lined butterfly valves Desponia
- Situated at AVK Industrial Maanshan



Over 20 sales and distribution companies

- Switzerland
- Austria
- Italy
- Spain
- Germany
- Poland
- China
- USA
- South Korea



- InterApp companies
- AVK Industrial companies
- Export distribution partners

Our vision
is to make
complexity easy, ✓
→ **to reinvent**
the valve industry
and to create
a sustainable future. 🍃

Product solutions

InterApp product offering

- Large product range
- Standard and highly customised solutions
- InterApproved third-party products



Applications

Industrial applications



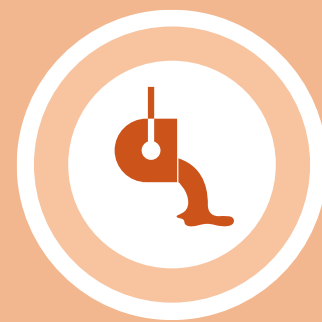
Chemical Process



Life Science



Pulp & Paper



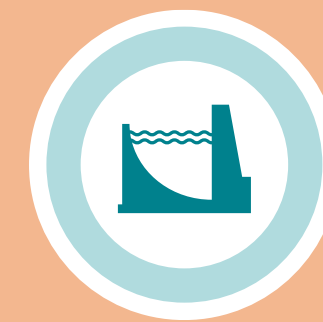
Steel Industry



Oil & Gas



HVAC & Swimming Pools



Dams & Reservoirs



Marine



District Cooling & Heating



Power Generation



Water Treatment



Mining & Slurry



Air Separation



Bulk Handling



Irrigation

Industrial applications



Green Hydrogen Production

Green Hydrogen facility,
Leuna, Germany

Water purification, electrolysis,
hydrogen and oxygen treatment
systems

- Bianca butterfly valve
- Desponia butterfly valve
- STCV check valves
- TLBH ball valves
- IA motion actuator



Industrial applications



Semiconductor Industry

Semiconductor plant,
GlobalFoundries, Singapore

Ultrapure water, waste water and
chilled water processes

- Bianca butterfly valve
- Desponia butterfly valve
- IA motion actuator



Industrial applications



Seawater Desalination

Sea water desalination plant
Campo Dalías, Almería, Spain

- Desponia butterfly valve
- IA motion actuator



Industrial applications

Mining Industry



Mining plants, Australia

Acid and solvent extraction of metals, slurries and cooling systems

- Bianca butterfly valve
- Desponia butterfly valve
- IA motion actuator



Industrial applications

Chemical Process



Bidachem S.p.A., Italy

Thermal regeneration combustor

- Bianca butterfly valve
- Desponia butterfly valve
- IA motion actuator



Industrial applications

HVAC



Super computer centre, Swiss
Federal Institute of Technology
(ETH), Lugano, Switzerland

Cooling system

- Aquaria plus butterfly valve
- Desponia butterfly valve
- Ball valves
- Check valves
- Electric actuators
- Accessories



Butterfly valves configuration

— Different components and features lead to “uncountable” possibilities of valve configurations

— The quantity of different geometries (outline drawings) is manageable and built in CADENAS

Valve types (6)

Aquaria
Bianca
Desponia
Desponia plus
Elara
Saturnia

Body types (3)

Wafer
LUG
U-shape

Sizes (28)

DN 25
...
DN 1600

Working pressure (7)

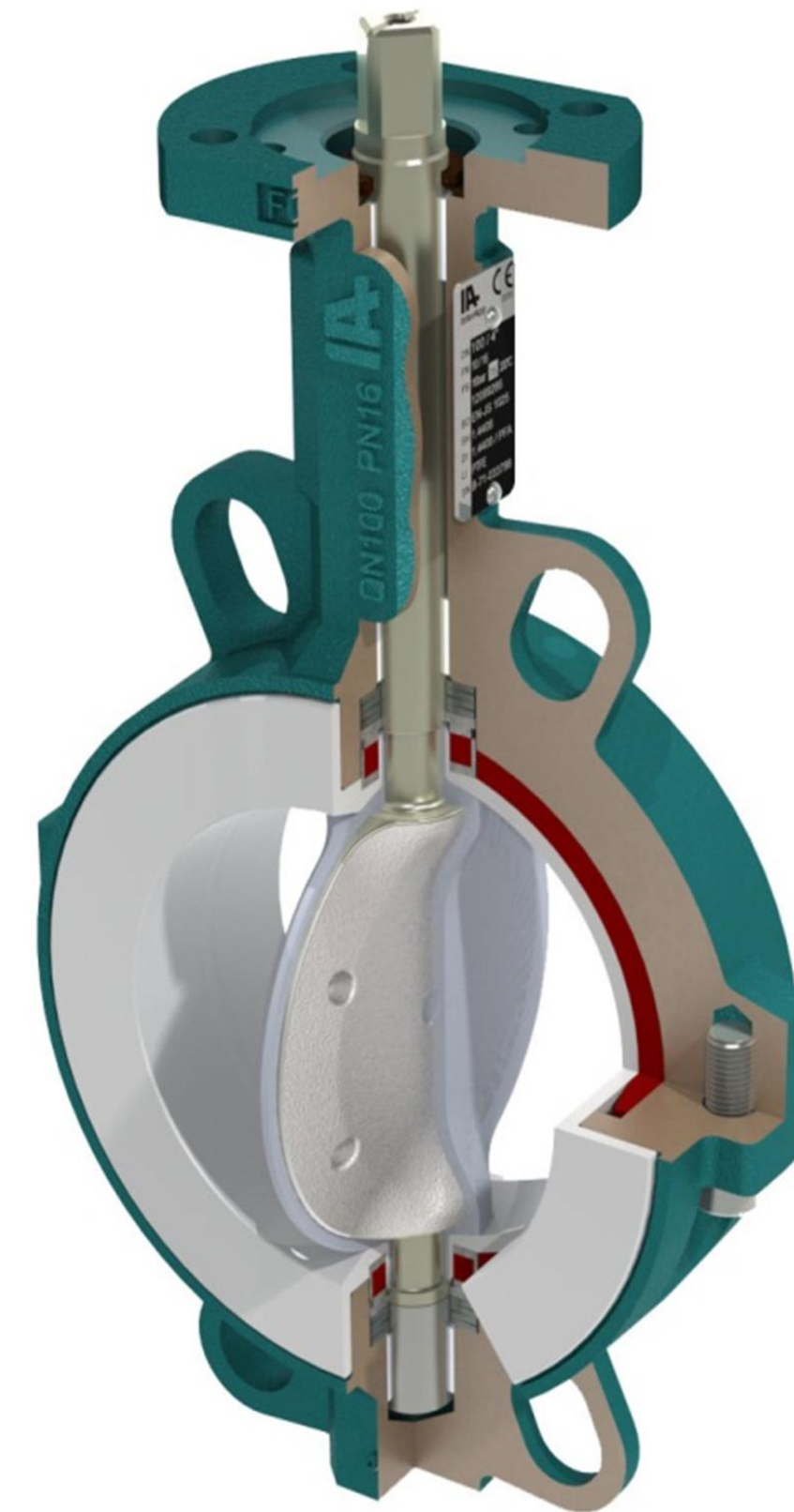
0,5 / 2,5 / 6 / 10 / 16 / 25 / 50

Connection std (15)

ANSI 150, 300
PN 6, 10, 16, 25, 40
...
JIS16K

Body material (15)

Cast iron
...
Super duplex



Body coating (7)

Epoxy
...
Polyurethane

Shaft material (5)

Stainless steel
...
Super duplex

Disc material (23)

Carbon steel
...
Super duplex

Disc coating (16)

Chromed
...
Halar

Liner material (48)

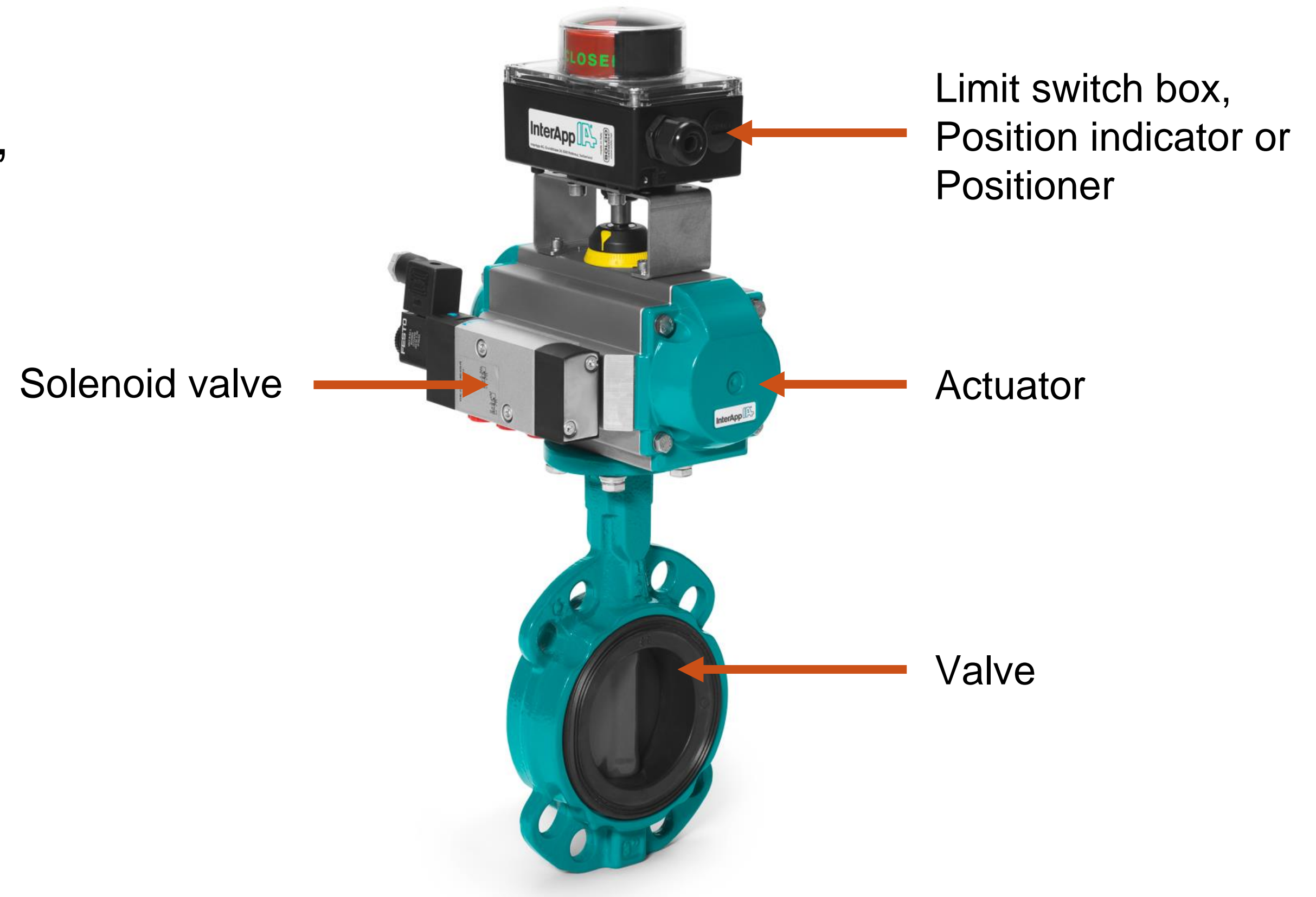
EPDM
...
Viton

Options (>999 / 10x99)

ATEX
Colours
...
Fat free, High purity
Flange threads

Product assemblies

- Valve
- Actuator (Pneumatic, Gearbox, Hand lever, Electric)
- Mounting brackets
- Couplings
- Position indicator (Visible/electric)
- Positioner
- Solenoid valves
- Silencer
- Air flow regulator
- Stroke limiters
- Tag labels, screws
- Shaft extensions
- ...



The possible mix results in an “uncountable” number of different geometries (Outline drawings)

Configuration

ValveFinder® & CPQ

— Logic for valves and product assemblies

Valve definition

Product Specifications

Type: --- not specified ---

Body type: --- not specified ---

Diameter: --- not specified ---

Working pressure: --- not specified ---

Rating norm: --- not specified ---

Body material: --- not specified ---

Shaft material: --- not specified ---

Disc material: --- not specified ---

Liner material: --- not specified ---

Ambient temp °C: Min. 0 Max. 0

Working Conditions

Medium 1: --- not specified ---

Temp° C Min. 0 Max. 0

Conc. % Min. 0 Max. 0

Medium 2: --- not specified ---

Temp° C Min. 0 Max. 0

Conc. % Min. 0 Max. 0

Abrasive

Apply medium selection

Product Options

Standard

054 - F16, shaft square 46 h=46mm

058 - Shaft h=32mm

125 - Shaft Ø65 mm h=80 mm

147 - Top flange drilled for AF.30/25-25 or AF.30/16-25, shaft + 25mm

345 - Shaft square 22 h=27mm

321 - Shaft square 27 h=27mm

153 - F14 shaft square 36 h=37mm

156 - Shaft Ø45 mm with 2 keys h=80 mm

163 - F14, shaft Ø45 h=65mm

194 - Top Flange drilled for mounting of AF.F25/F16-25; shaft length +25mm and shaft d 65 mm

112 - Valve with earthing/grounding screw, for expl osive atmospheres Zone 1 (o) IIC / T6...T3, Zone 21 (o) IIC / 85...200°C

135 - Valve with earthing/grounding screw, for expl osive atmospheres Zone 1 (o) IIB / T6...T3, Zone 21 (o) IIC / 85...200°C

X Clear Fields 🔍 Find Valves

Display max: 3

Adding accessory

Article Code	Name	Select	ex tax
Actuator: Limit switches (not in combination with positioners) (max. 1 item)			
ES2.PE.PP2M01-3D	Limit switches box 1/O+1/C	<input type="checkbox"/>	n/a
SRBC-CA5-YR90-MW-22A-1W-C2	Aluminium limit switches box 1/O+1/C	<input type="checkbox"/>	n/a
Actuator: Proximity switches (not in combination with positioners) (max. 1 item)			
ES2.PE.PP2I01-3D	Proximity switches box 1/O+1/C	<input type="checkbox"/>	n/a
ES2.PE.PP2I01-19-3D	Proximity switches box 1/O+1/C	<input type="checkbox"/>	n/a
ES2.PE.VP2I01-IA-3D	Proximity switches box 1/O+1/C	<input type="checkbox"/>	n/a
SRBC-CA5-YR90-N-1-P-C2	Aluminium inductive switches box 1/O+1/C	<input type="checkbox"/>	n/a
SRBC-CA5-YR90-N-20N-ZC-C2-EX6	Aluminium inductive switches box 1/O+1/C	<input type="checkbox"/>	n/a
SRBC-CA5-YR90-N-1-ZU-C2P20	Aluminium inductive switches box 1/O+1/C	<input type="checkbox"/>	n/a
Actuator: Mounting parts accessories			
DARQ-K-X1-A1-F05-20-R1	Mounting part for SRBC limit switch box for IA050 - IA300	<input type="checkbox"/>	n/a
Actuator: Solenoid valves (max. 1 item)			
VSNC-FC-M52-MD-G14-FN-1A1+G.24VDC	5/2-3/2-Solenoid valve NAMUR DN7 24VDC	<input type="checkbox"/>	n/a
MNH510701EXM-MA22EEXMIIT4-24VDC	5/2-Solenoid valve 24VDC, EEx m II T5, NAMUR 1/4", 1250 NI/min, 2 - 10 bar, 3W/5A	<input type="checkbox"/>	n/a
MNH510701EXDM-MA36EEXDMIIT5-24VDC-ZPN8	5/2-Solenoid valve 24VDC, EEx dm II CT4, NAMUR 1/4", 1250 NI/min, 2 - 10 bar, 3W/5A	<input type="checkbox"/>	n/a
Actuator: Flow regulators			
DPN.F.544.04	Flow regulator for double acting actuator NAMUR 1 for VSNC	<input type="checkbox"/>	n/a

Actuator selection

Actuators Article-Code D10025.33-2KR.41.2AE.E

Kind of actuator

Electric

Gearbox

Handlever

Pneumatic

Material

Aluminium

Operation

Double acting

Single acting

Technology

Voltage

230V 1-phase

400V 3-phase

Service duty

Type

AL

AU

BE

IA Motion

Adjustment

6 positions

Adjustable

on/off

Isolation

IP65

IP68

Special

All

Ambient temperature °C: Max 0 Min 0

Dry medium / severe condition: Yes

Pneumatic

Min. supply pressure: 6 bar

Supply pressure fail position if applicable: Close

Electric

Opening/closing time for 1 operation: Seconds min: 0 Seconds max: 0

X Clear Fields 🔍 Find Actuators

Informations and usage are based on our terms&conditions. All rights reserved. © 2016 InterApp.

Product assemblies in the cart

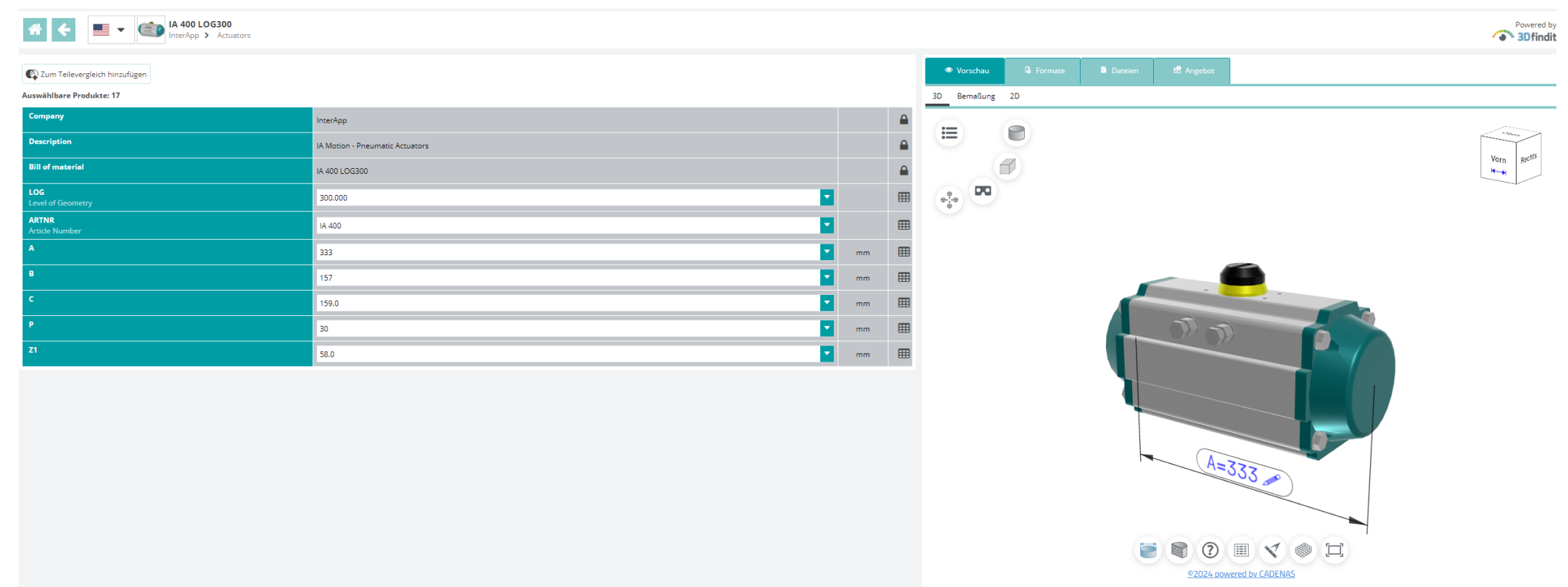
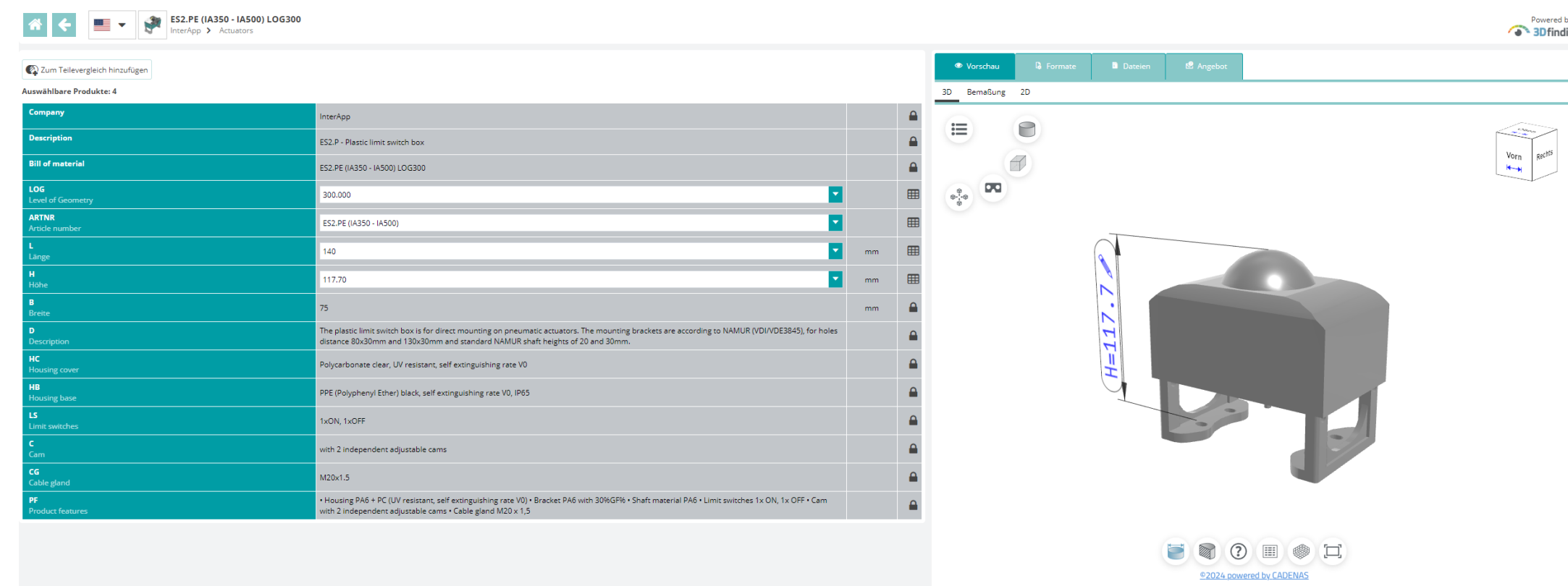
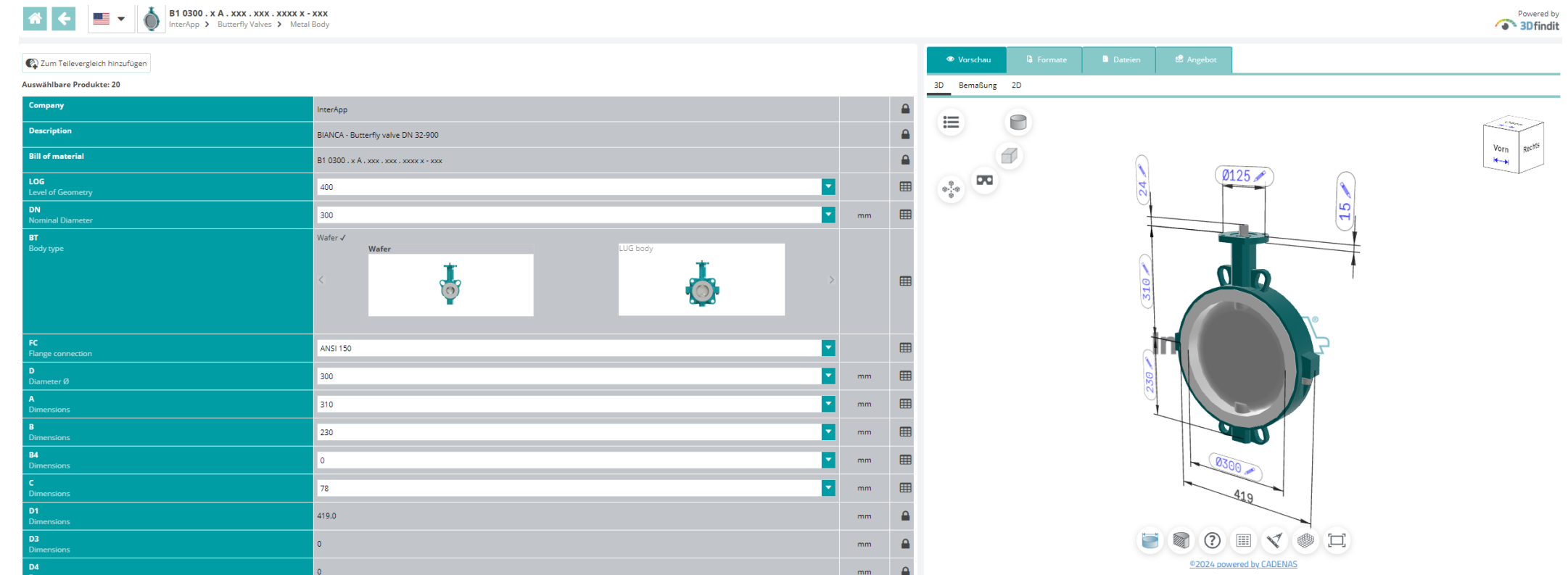
Pos.	Code	Description	Price	Quantity	Total
1	DP1200.03-2AN.41.2AE.E	Butterfly Valve Desponia plus Wafer DN 200; PN 6/10/16/25, ANSI cl. 150, AS D/E, AWWA C207 D; 2,5 bar; Body GGG40 / 0.7040 / EN-JS 1030, Polyurethane; Shaft 1.4021 / X 30 Cr 13 or X 20 Cr 13; Disc GGG40 / 0.7040 / EN-JS 1030, Polyurethane; Liner EPDM	n/a	1	n/a
1a	IA250D.F05-F0717	Pneumatic actuator double acting rack and pinion	n/a	1	n/a
1b	ES2.PE.PP2I01-3D	P+F NBB2-V3-E2 PNP	n/a	1	n/a
Edit Actuator Edit Accessory Duplicate Delete					
2	D10025.33-2KR.41.2AE.E	Butterfly Valve Desponia Wafer DN 25; PN 10/16/25, AS D/E, JIS 10K/16K; 16 bar; Body GGG40 / 0.7040 / EN-JS 1030, Resicoat; Shaft 1.4021 / X 30 Cr 13 or X 20 Cr 13; Disc GGG40 / 0.7040 / EN-JS 1030, Polyurethane; Liner EPDM	n/a	1	n/a
2a	IA100D.F05-F0711	Pneumatic actuator double acting rack and pinion	n/a	1	n/a
2b	ES2.PE.PP2I01-3D	P+F NBB2-V3-E2 PNP	n/a	1	n/a
Edit Actuator Edit Accessory Duplicate Delete					
Total exclusive of taxes					n/a

+ New Cart
🖨 Print Cart
📄 Export to Excel
Request quotation

Outline drawings basic components

InterApp components with Cadenas

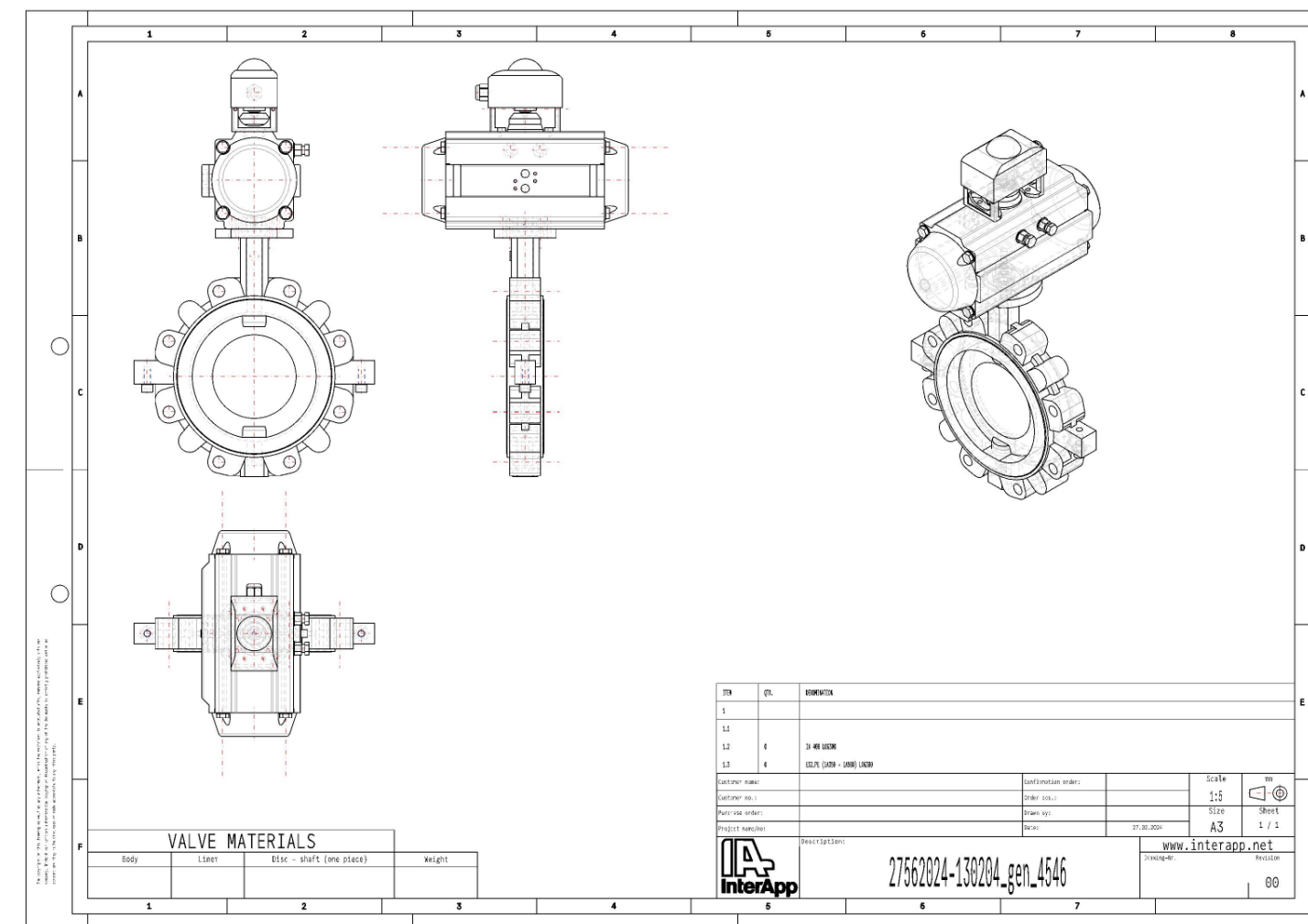
— Download for basic components



Outline drawings product assemblies

CAD 2 Customer

— Putting together basic components to a product assembly



InterApp IA

CAD 2 Customer

Environment QA

Valve

Type of valve:

Type of valve body:

Diameter:

Connection standard:

Body material:

Body color:

Disc material:

Liner material:

Generate Preview

Actuator

Type:

ArtNr:

Mounting:

Positioner:

Solenoid valve:

Flow regulator:

Position indicator (Limit switch box)

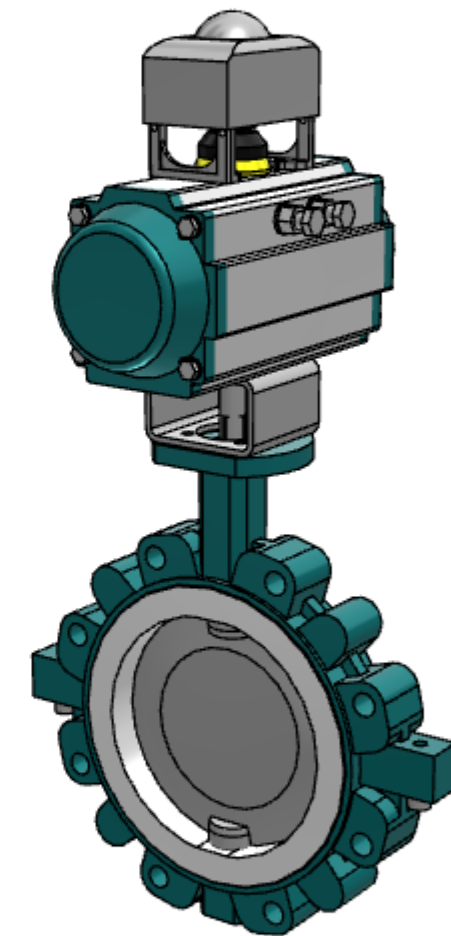
ArtNr:

Mounting bracket

ArtNr:

Coupling

ArtNr:



@2024 powered by CADENAS

File format

Download CAD

Email address

Send mail

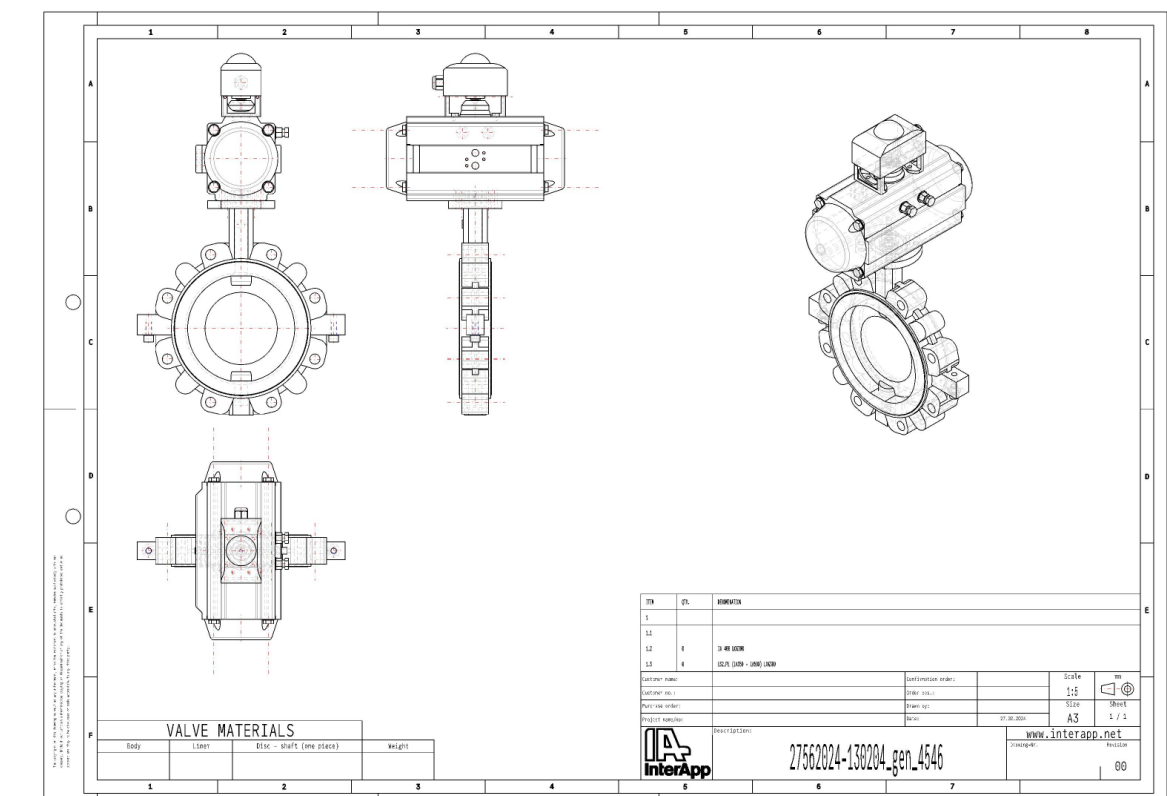
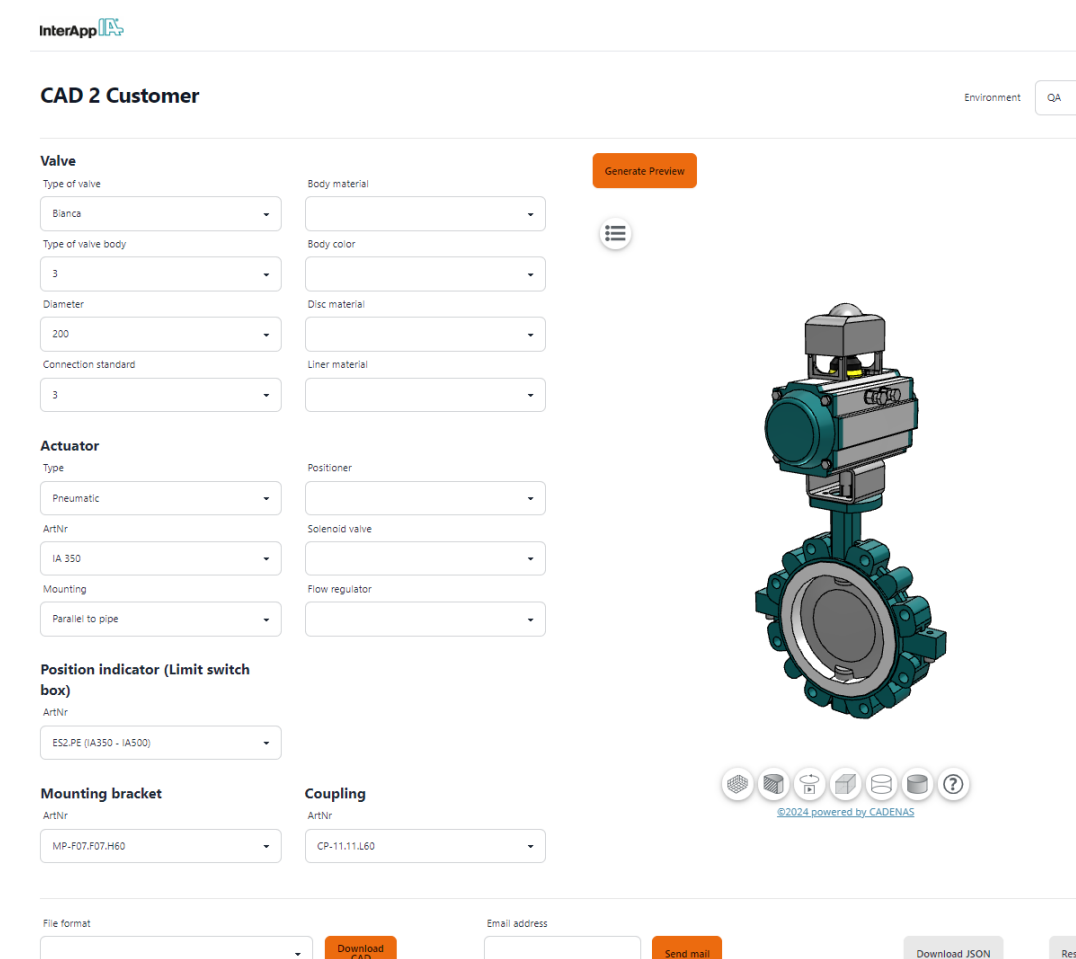
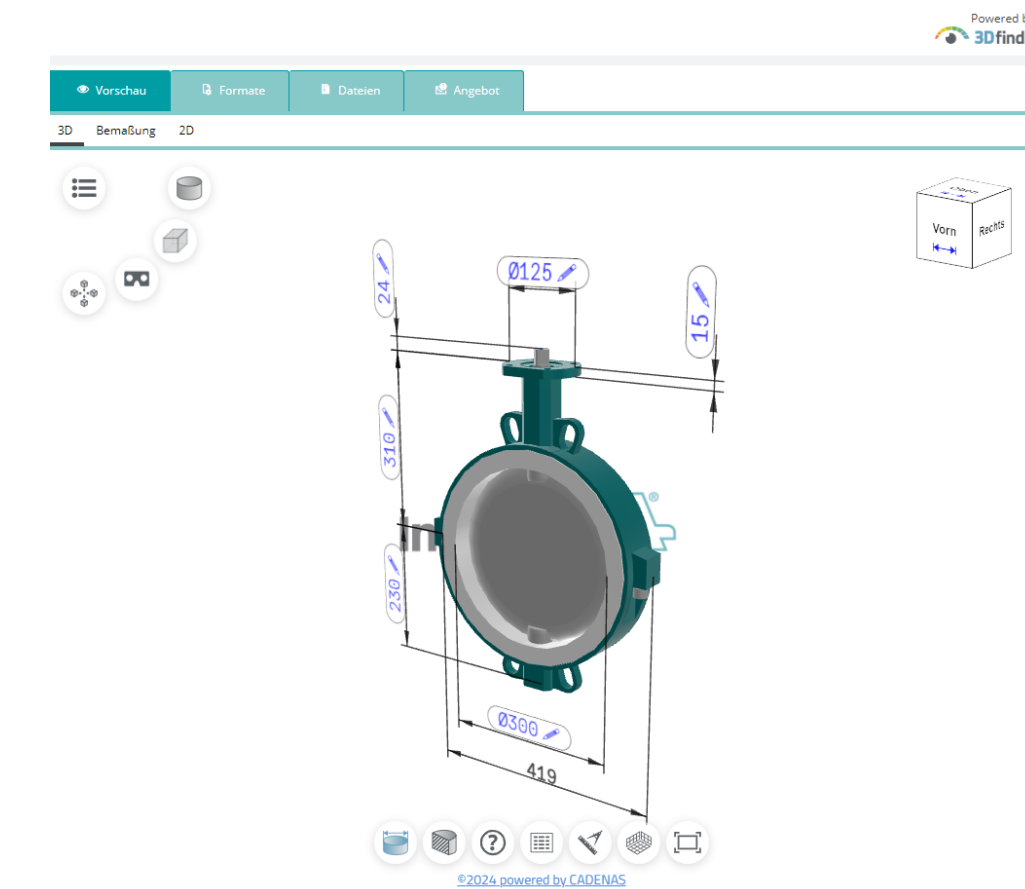
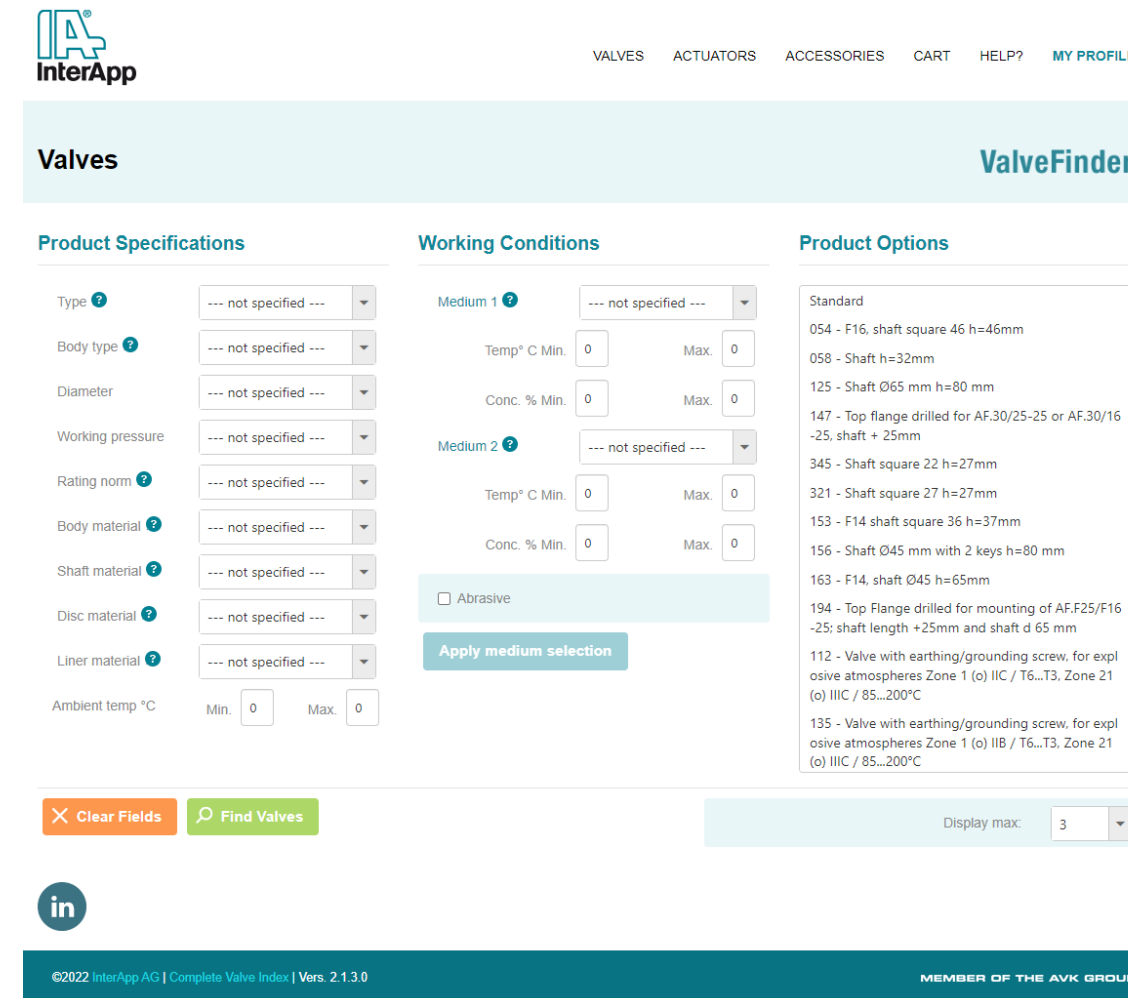
Download JSON

Reset

Product solutions digital twin

ValveFinder 2.0 + CAD 2 Customer = 3

- ValveFinder® facilitates creating valid valve and product assemblies
- Custom product assembly drawings utilise existing CADENAS components
- Basic components in CADENAS are used, that already are available to customers not known to us yet
- Drawing administration in a single location



Thank you

Danke

Merci

Grazie

Gracias

Dziękuję

