

## Intelligent finding of parts at the Haas-Group



Michael Eder  
Head of IT - CAD/CAE Solutions  
[michael.eder@haas.com](mailto:michael.eder@haas.com)

- Short presentation of my person
- Company presentation
- ITO @HAAS
- Intelligent finding of parts at the Haas-Group
- Parts reuse / reduction
- Fit for Future

## Michael Eder, B.Eng.

- Education:
  - HTL Hollabrunn – Wirtschaftsingenieurwesen
    - Focus: Business informatics
  - HFH – Hamburger Fern-Hochschule
    - Focus: Industrial engineering, quality management
- Professional background:
  - Deloitte
    - 05/2006 – 02/2011
  - Haas Food Equipment GmbH
    - Since 03/2011



# decades of experience

- 1905 establishment of a building and machine fitting business
- 1948 construction of the trend-setting HV6
- 1975 relocation of the production to Leobendorf
- 1977 Haas do Brasil
- 1980 Haas of America

- 2002 acquisition of Mondomix
- 2003 acquisition of GAM Steinhoff
- 2005 100<sup>th</sup> anniversary and new management by the 4<sup>th</sup> generation
- 2006 Haas Food Machinery Shanghai
- 2009 takeover of 85% of DFE Meincke Holding
- 2011 Haas Colombia
- 2013 Haas Ghana, Haas India and Haas Moscow
- 2015 Haas Turkey



OUR MISSION – YOUR SUCCESS

OUR STRATEGY – STABLE GROWTH

- 100% family-owned
- 100% reliability
- 100% sustainability

... for more than 110 years!



# HAAS – specialists taking care



FHW Franz Haas  
Waffelmaschinen GmbH



CFT Haas Convenience  
Food Equipment GmbH



Haas-Meincke A/S



Haas-Mondomix B.V.





**FHW Franz Haas Waffelmaschinen GmbH**  
produces wafer equipment for flat wafer bars,  
hollow wafers and hollow wafer sticks

- headquarters in Leobendorf, Austria
- approx. 416 employees
- turnover 2015: EUR 123,1 mio.
- approx. 96 projects per year



# your innovative partner for ice cream cones and waffles



**CFT Haas Convenience Food Equipment GmbH** manufactures plants for rolled and molded ice cream cones, molded cones and cups, special wafer products, Belgian waffles, pancakes and wafer rolls

- headquarters in Leobendorf, Austria
- approx. 69 employees
- turnover 2015: EUR 22,2 mio.
- approx. 25 projects per year







Haas-Meincke A/S is focused on equipment for biscuit products, crackers, cocktail crackers, lye and semi-sweet products, all kinds of soft dough biscuits like molded or wire-cut products and cake products

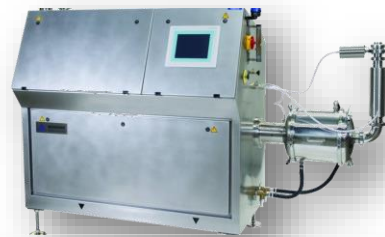
- headquarters in Skovlunde, Denmark
- facilities in Leobendorf, Austria / Roedkaersbro, Denmark / Ettenleur, The Netherlands
- approx. 284 employees
- turnover 2015: EUR 95,5 mio.
- approx. 86 projects per year





Haas-Mondomix B.V. is specialized in mixing, aerating and depositing equipment for bakery, confectionery, dairy and non-food products

- headquarters in Almere, The Netherlands
- approx. 93 employees
- turnover 2015: EUR 30,3 mio.
- approx. 118 projects per year



## Haas do Brasil

- headquarters in Curitiba, Brazil
- founded in 1977
- approx. 187 employees
- approx. 25 projects per year
  
- production of:
  - wafer equipment incl. SWAK-DOLPHIN and EWB-IGUANA,
  - biscuit and cracker equipment incl. PUMA Line, mixing
  - systems incl. High-Speed Mixer HSM and bread equipment



## Haas of America

- headquarters in Richmond, Virginia (USA)
- founded in 1980
- approx. 16 employees
- approx. 25 projects per year
  
- trainings are done on actual machines



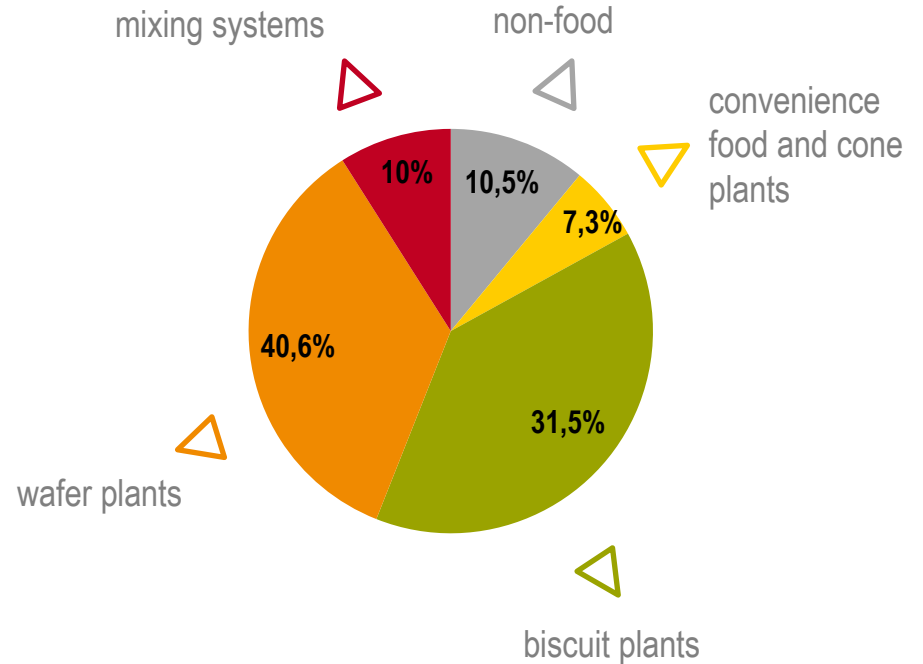
## Haas Food Machinery

- headquarters in Shanghai, China
  - founded in 2006
  - approx. 118 employees
  - approx. 31 projects per year
- 
- production of :  
wafer equipment SWAK-FOX, EWB-LIZARD  
and cracker line PUMA



# market leader in all business fields

## BREAKDOWN IN BUSINESS FIELDS



### TURNOVER 2015

- approx. EUR 303 Mio.

### EMPLOYEES 2015

- approx. 1655

# HAAS in your region

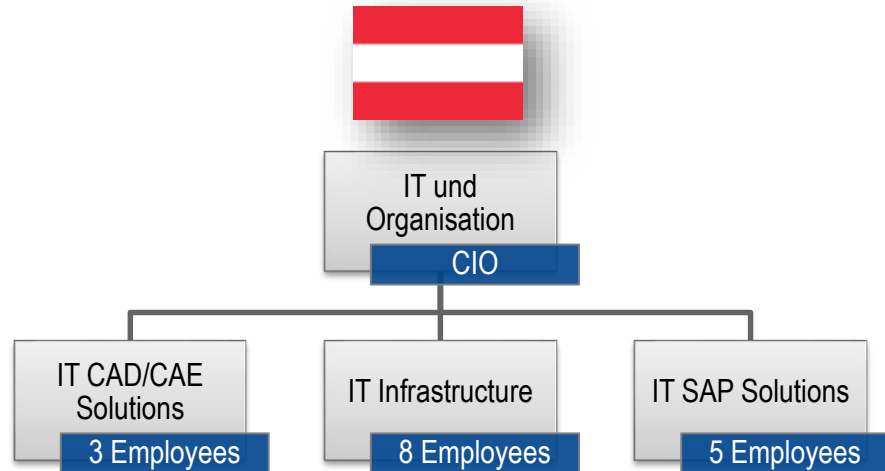


# engineering around the world











2 Employees



1 Employee

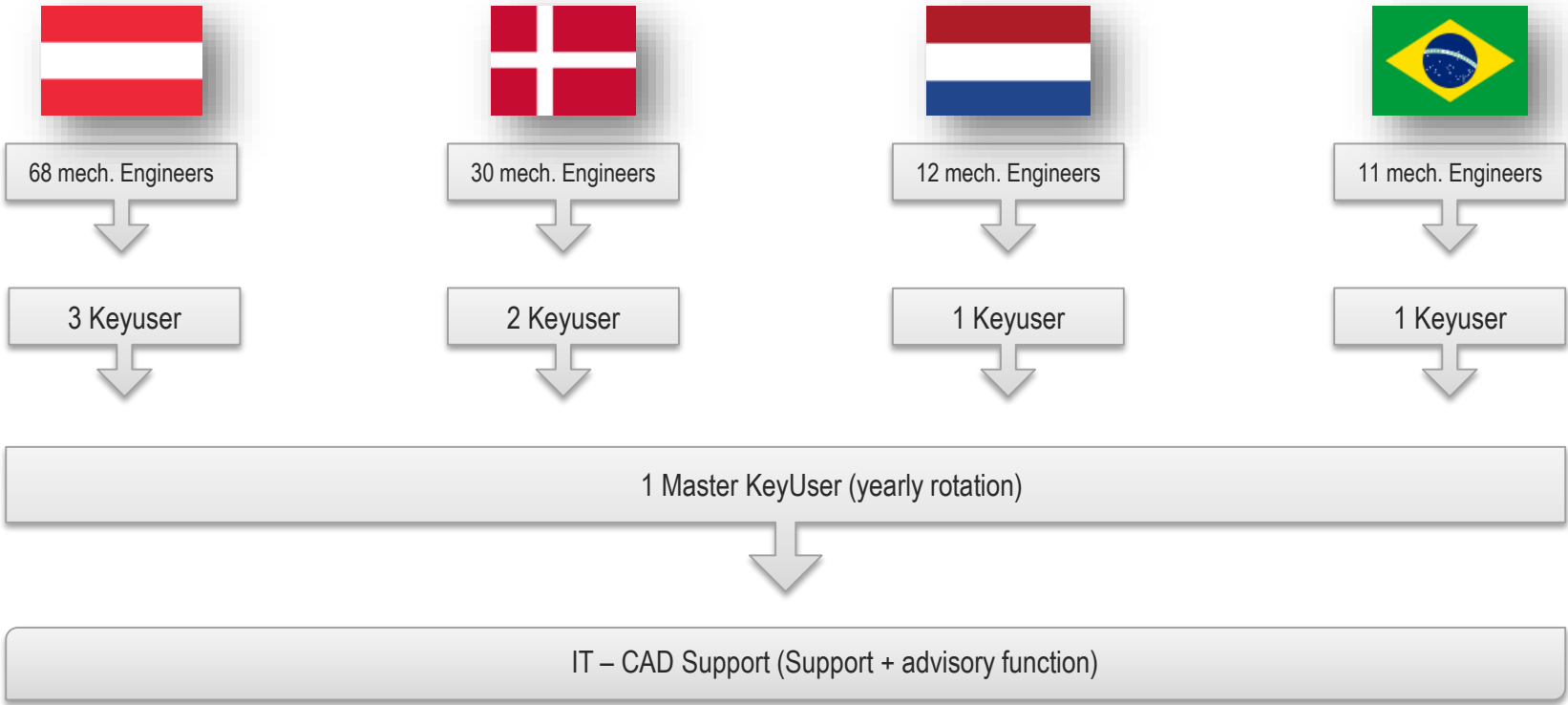


3 Employees



External Employees

# CAD/PDM Link Organisation



- Standard CAD/PLM environment at all engineering sites



- StartUp Tools 2013 M061 inkl. Model Processor 4.0 M020 von INNEO

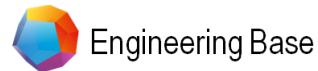


- Creo 2.0 M200



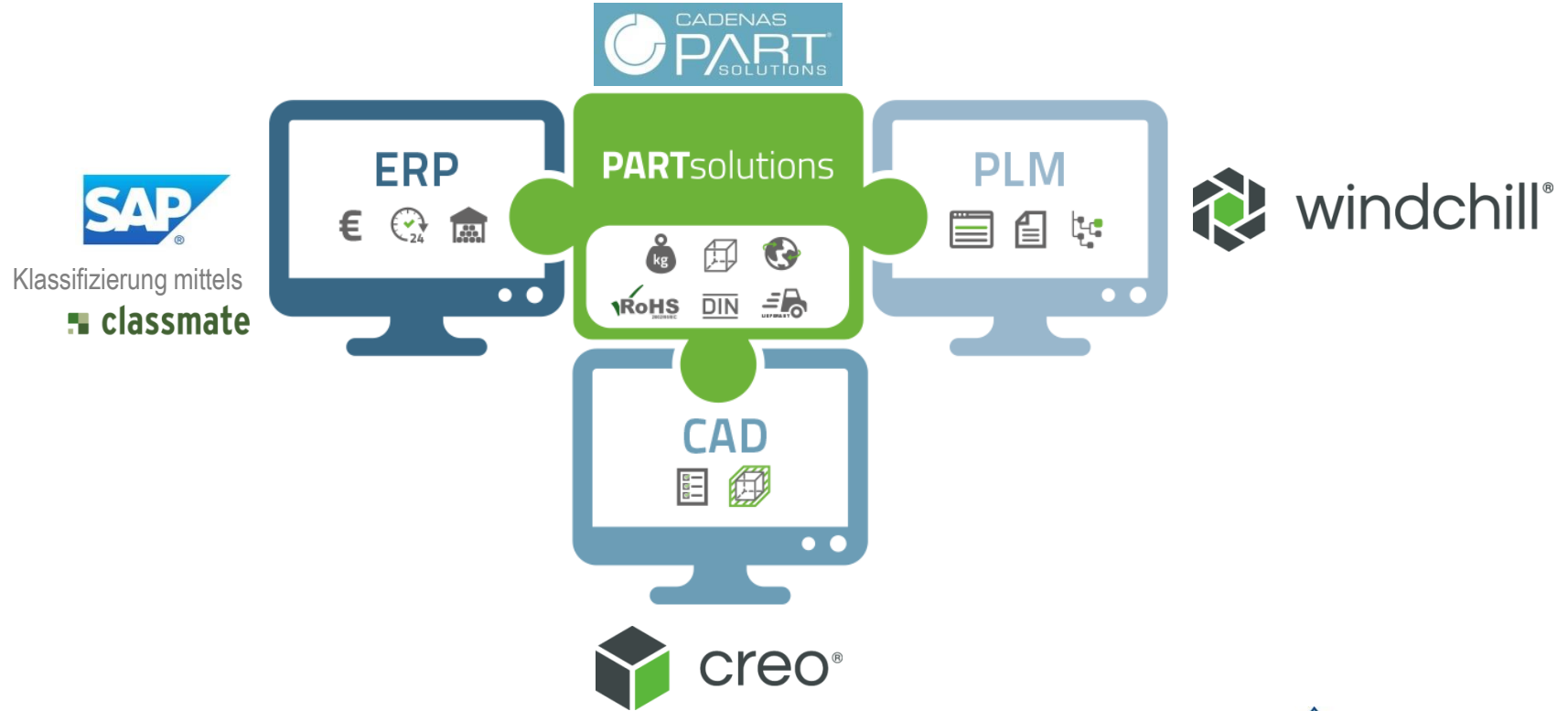
- Windchill 10.2 M030

- Standard CAE environment at all engineering sites



- Engineering Base 6.7



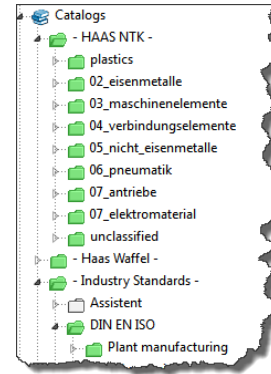


- Use of standard parts (standard parts, purchased parts, HAAS standard part catalog parts)



- Challenges:
  - Use of same standard parts at all sites
  - Removing of all duplicates in the system (screws, ...)
  - Administration of these parts also without SAP at the site

- Content within PARTsolutions :
  - Standard-/purchase part library
  - HAAS standard part catalog (by product structure)
  - Figure classification (HAAS-structure)

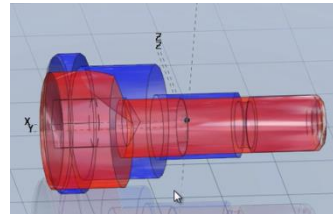


- Search functions :

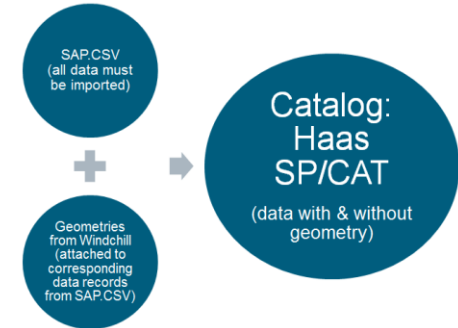
- Full text search



- Geometric similarity search



- HAAS standard part catalog:
  - Daily update of the HAAS standard part catalog with data from:
    - SAP (ERP-Data)
    - Windchill (3D geometries)
    - Figure classification from SAP (additional metadata available in the PARTdatamanager)
  - Imported data is automatically sorted into the product structure
  - Metadata multilingual available



	Beschreibung EN	Nettogewic...	MatStatus LEO	Disponent LEO	Planlieferzeit L...	Durchschn. Einsta...	Lieferant LEO	Lieferant letzt...	Lagerplatz LEO	verf. Bestand L...	Telekategorie ...	Preview	Klasse	Gewinded...	Länge [mm]	Norm Nr.	Werkstoff	Document Path	Document Name	Sonder Gewind...
290	Hexagon Head Flange Screw M10x120 A2SST	0,020 KG	...	...	...	...	BOSSARD	...	...	0.000	...							NOCAD		
291	Hexagon Head Flange Screw M10x110 A2SST	0,020 KG	...	...	...	...	BOSSARD	...	...	1.000	...							Standards/cadenas	...	...

ERP data filled by nightupdate

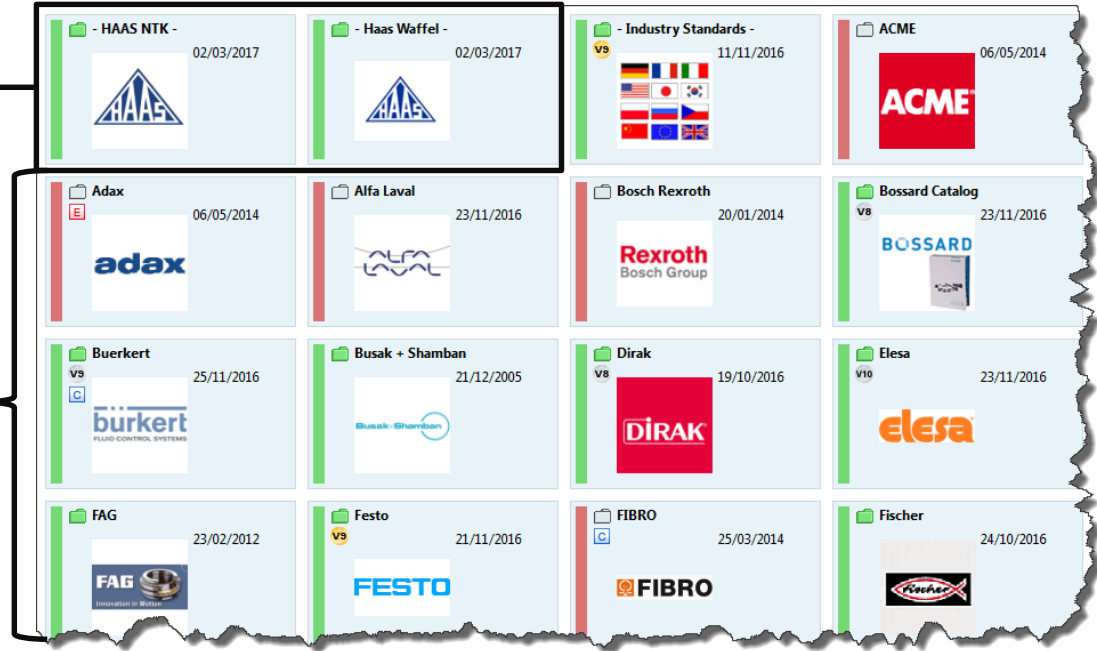
Geo data filled by PLMS



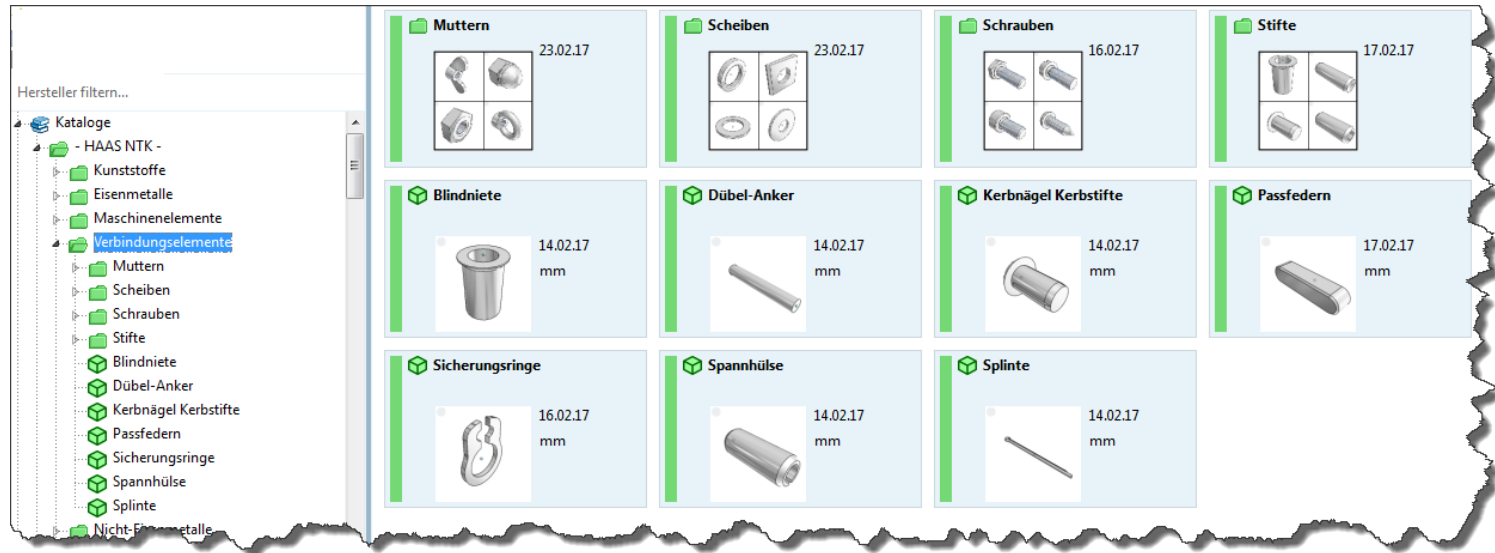
- Content within PARTsolutions:

- HAAS standard part catalog

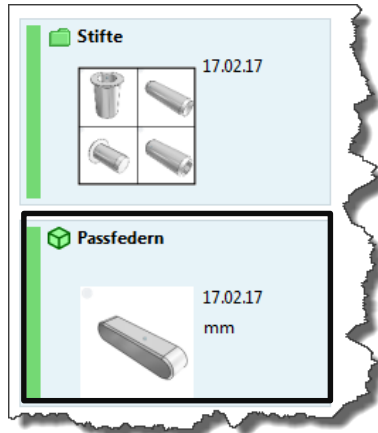
- Supplier catalogs



- Content within PARTsolutions:
  - HAAS standard part catalog (by product structure)

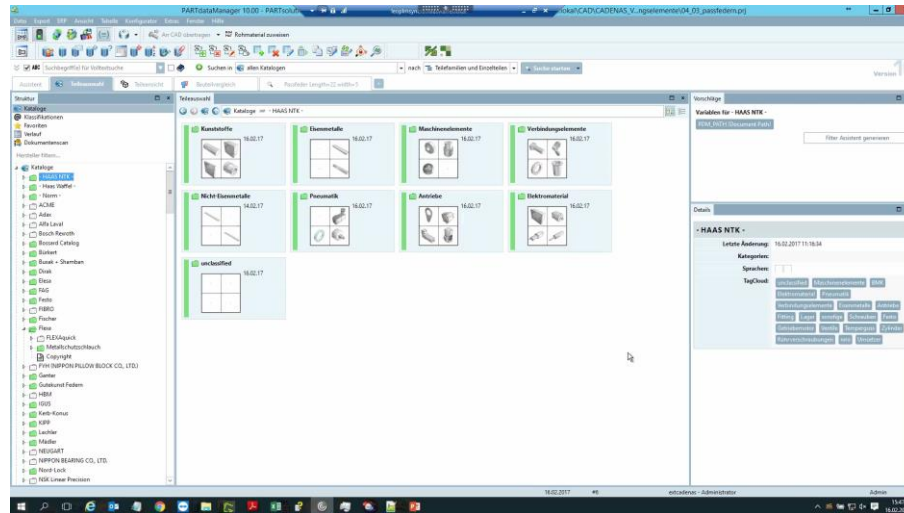


- Content within PARTsolutions:
  - Figure classification (HAAS-structure)

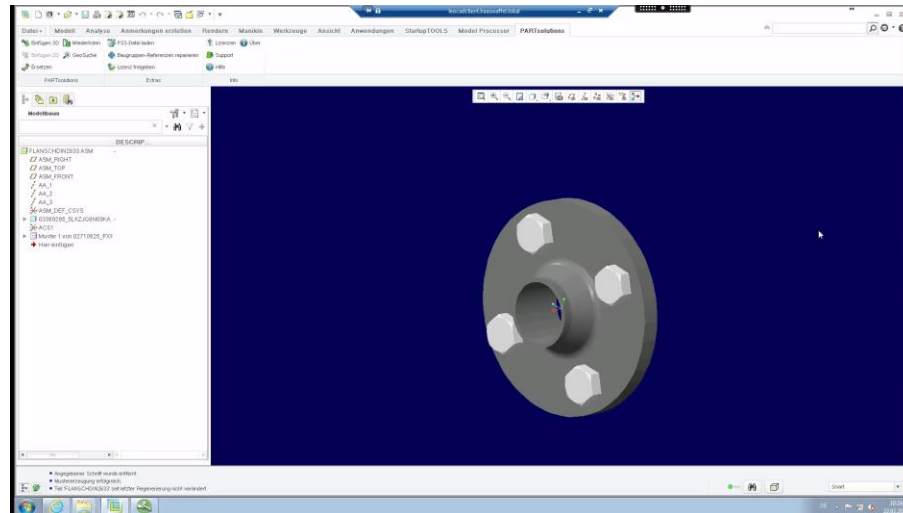


PREVIEW Preview	H_FILENAME Document Name	KK Klasse	FORM Formbuch...	HEIGHT Höhe [mm]	LENGTH Länge [mm]	NORMT Normbezei...	WIDTH Breite [mm]	WRKST Werkstoff
	01016849.PRT	Passfeder	A	5.000	22.000	DIN 6885	5.000	
	01016857.PRT	Passfeder	A	5.000	50.000	DIN 6885	5.000	
	01016865_BL81NY4VJYIV.PRT	Passfeder	A	6.000	22.000	DIN 6885	6.000	
	01016873.PRT	Passfeder	A	6.000	40.000	DIN 6885	6.000	
	01016881.PRT	Passfeder	A	6.000	50.000	DIN 6885	6.000	
		Passfeder	A	7.000	32.000	DIN 6885	8.000	
	01016911.PRT	Passfeder	A	7.000	90.000	DIN 6885	8.000	
	01016938.PRT	Passfeder	A	8.000	40.000	DIN 6885	12.000	
	01016946.PRT	Passfeder	A	10.000	100.000	DIN 6885	16.000	
	01016962.PRT	Passfeder	A	12.000	63.000	DIN 6885	20.000	
	01016970.PRT	Passfeder	A	12.000	100.000	DIN 6885	20.000	
	01016989.PRT	Passfeder	A	12.000	130.000	DIN 6885	20.000	
	01016997.PRT	Passfeder	A	12.000	200.000	DIN 6885	20.000	
	01047256.PRT	Passfeder	A	7.000	130.000	DIN 6885	8.000	
	01047310.PRT	Passfeder	A	6.000	18.000	DIN 6885	6.000	
	01047337.PRT	Passfeder	A	6.000	8.000	DIN 6885	6.000	
	01047345.PRT	Passfeder	A	4.000	16.000	DIN 6885	6.000	

- Used search functions:
  - Full text search via HAAS standard part catalog (Feather key Length = 22 Width = 5)

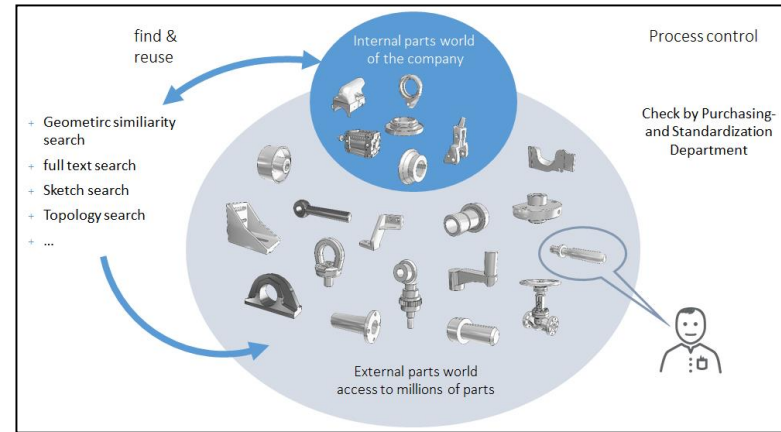


- Used search functions:
  - Geometric similarity search in Creo

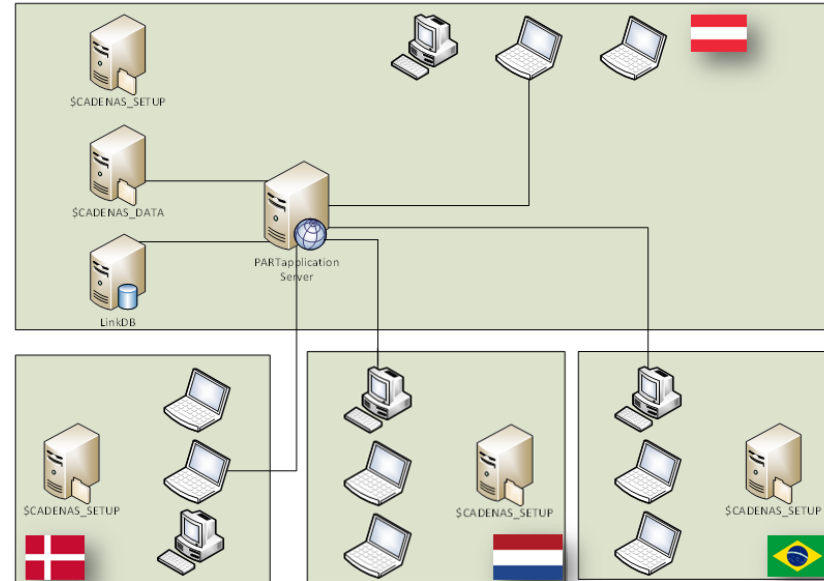


# Parts reduction / reuse @HAAS

- **Parts reuse:**
  - Possibility to show and find all parts within PARTsolutions
  - HAAS standard part catalog parts (“non“ CADENAS parts) are available
- **Parts reduction:**
  - Centralized parts creation for new parts (material master creation) by global Standardization Department
    - Avoid duplicates
    - Increase data quality
  - Mechanical engineers can export test parts (without material master creation)



- PARTapplicationServer
  - Better data integration, data encapsulation (security)
  - Global usage possible:
    - Benefits:
      - Parts management can be lived
      - Requirement to reduce parts variety
      - Basis for a central purchasing
      - Global usage with central data and without replication (separate servers) possible
  - Deep integration into Windchill via PTC Navigate



- LiveSearch

