

eCATALOG
SOLUTIONS

THE ELECTRONIC PRODUCT CATALOG

UNIQUE SOLUTIONS FOR MARKETING, SALES AND ENGINEERING

Kill 2 birds with one stone
Generate print & web catalog from
one data source

- **Customers demands on documentation increase**
- **Users need information quickly**
- **Information has to be up-to-date**
- **Different media and output formats are required**
- **All kinds of different contents are required**
- **Data maintenance/compilation is realized in different departments and systems nowadays**
- **As a result there are individual islands with a different state of data**
- **The same data is generated several times**



Motivation

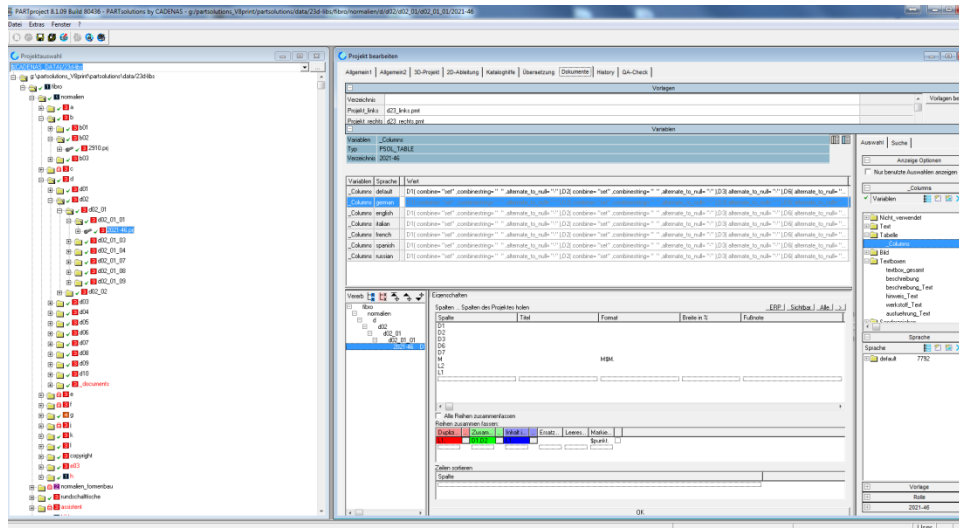
Research has shown that 50% of the data is generated in companies

- **One surface for data maintenance**
- **As much contents as possible should be generated from one solution**
 - **3D views**
 - **2D drawings**
 - **Product pictures**
 - **Dimensional information**
- **Central database**
- **Output possible in different media channels**

The solution

Data maintenance in PART project

- All texts are entered into a central database
- Dimensioned drawings, previews etc are linked to the products
- Tabular values are configured
- Multi-lingual information can be managed
- The data is allocated to so called media variables



- Tabular values and 3D models are the basis of the CADENAS catalogs

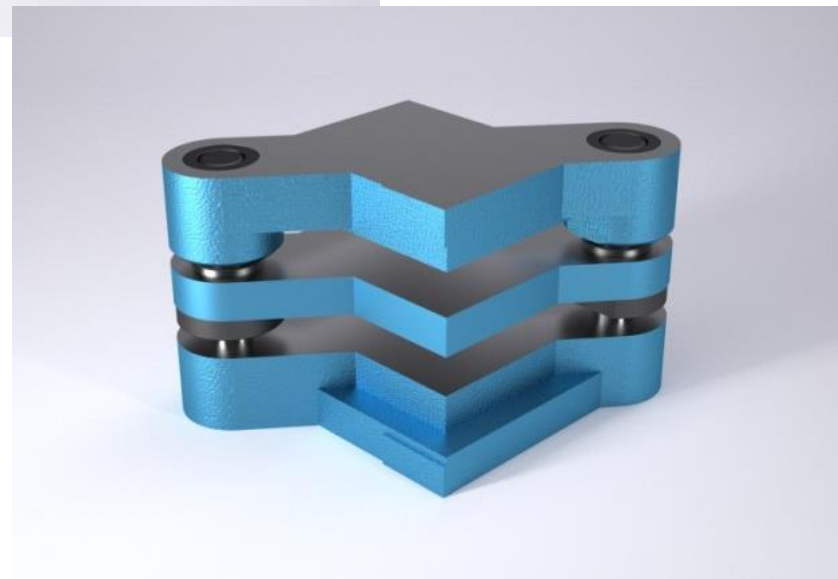
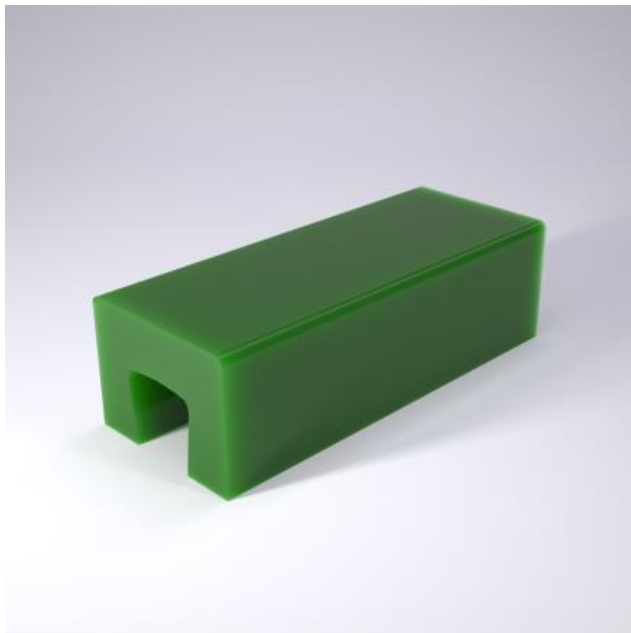
The screenshot displays a software window titled 'Projekt anzeigen (Schreibgeschützt)'. The main content is a table for 'Schnidstempel DIN 9844, Form B'. The table has columns for 'Name', 'DOC', 'Kategorie', 'Material', 'Schneid...', 'Stückl...', 'Länge [mm]', 'Schneid...', 'D2', 'L2', 'D3', 'R', and 'GEW'. Below the table is a 'Zusatzinfo' section with a text input field and 'Übernehmen', 'OK', and 'Abbrechen' buttons. To the right of the table is a 3D model of a mechanical part, a cylindrical component with a flange and a hole, shown in a perspective view with coordinate axes (X, Y, Z).

Name	DOC	* HAT	* D1	P	* L1	D2	L2	D3	R	GEW	
1	221.3.0010.071	221_pdf	HSS	0.50	0.050	71	2.000	7.000	3.600	0.200	0.002
2	221.3.0195.071	221_pdf	HSS	1.95	0.050	71	2.300	7.000	4.000	0.200	0.003
3	221.3.0250.071	221_pdf	HSS	2.50	0.100	71	3.200	7.000	5.000	0.300	0.005
4	221.3.0320.071	221_pdf	HSS	3.20	0.100	71	4.000	7.000	7.000	0.300	0.008
5	221.3.0400.071	221_pdf	HSS	4.00	0.100	71	5.000	7.000	8.500	0.500	0.012
6	221.3.0500.071	221_pdf	HSS	5.00	0.100	71	6.300	7.000	10.000	0.500	0.018
7	221.3.0630.071	221_pdf	HSS	6.30	0.100	71	8.000	16.000	12.000	0.700	0.028
8	221.3.0800.071	221_pdf	HSS	8.00	0.100	71	10.000	16.000	14.500	0.700	0.043
9	221.3.1000.071	221_pdf	HSS	10.00	0.100	71	12.500	16.000	18.000	1.000	0.067
10	221.3.1250.071	221_pdf	HSS	12.50	0.100	71	16.000	16.000	22.000	1.000	0.108



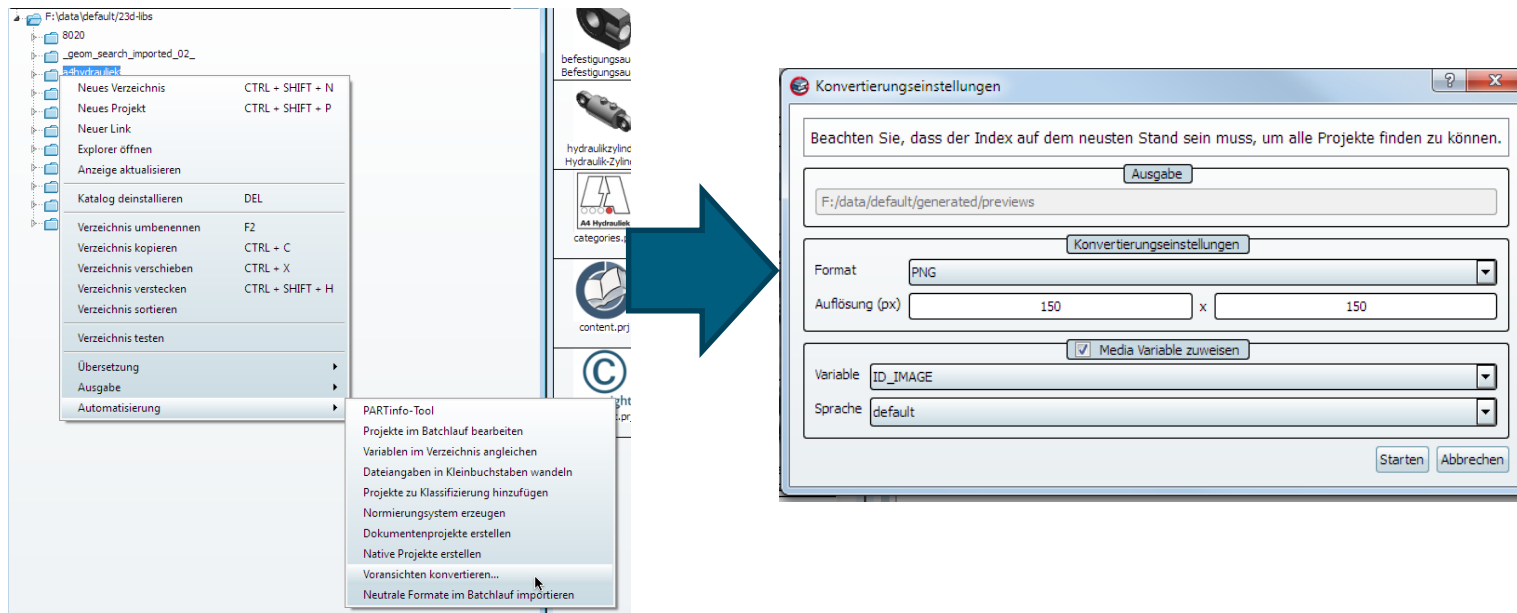
Photorealistic images?

- **Photorealistic images can be generated directly from the 3D data**
- **Images can be managed**



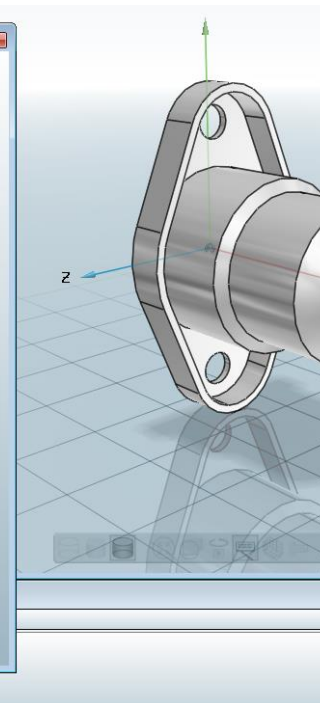
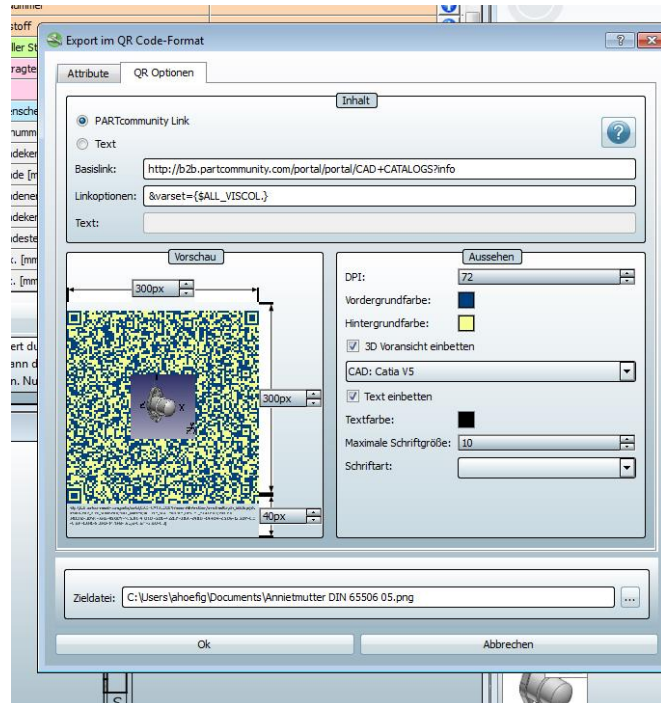
2D dimension drawings

- The 2D dimension drawings can be exported directly from PARTproject
- The dimension drawings can be allocated to one media variable
- All drawings at a time
- Possible to select format and size



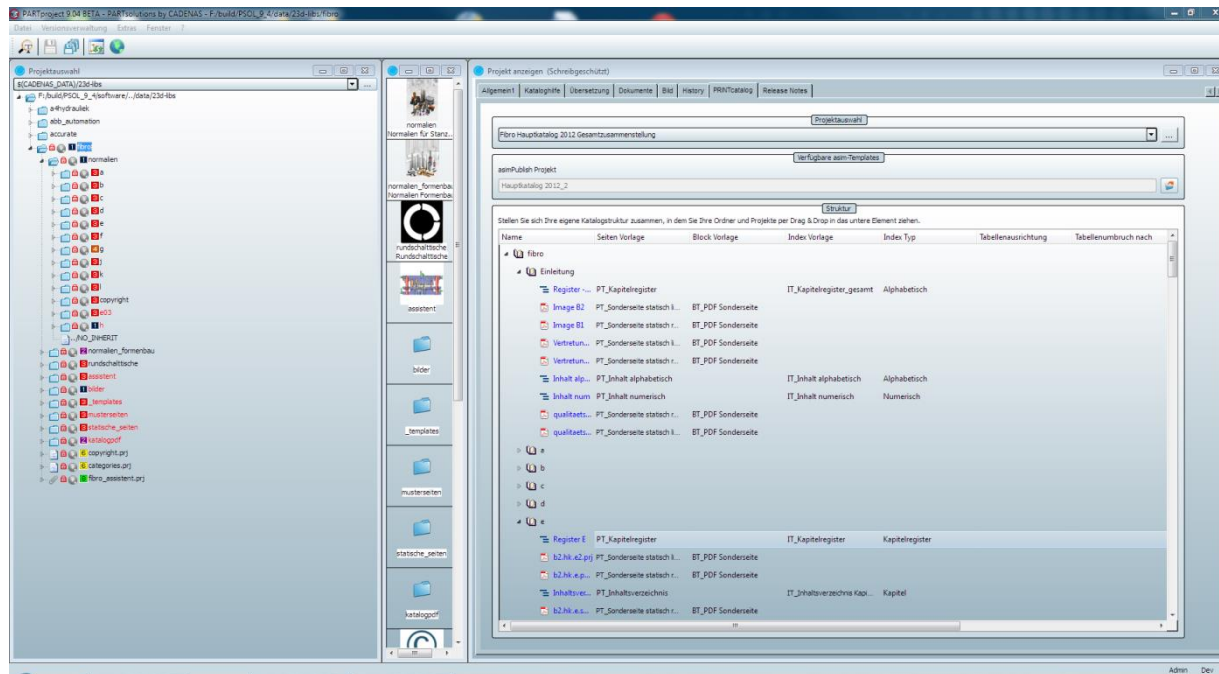
QR code generator

- QR code saves a link on a 3D part
- QR code can be generated directly from PARTproject
- Colors can be adjusted to CD
- Images can be integrated
- QR codes are also saved in Media DB



Creating the print catalog

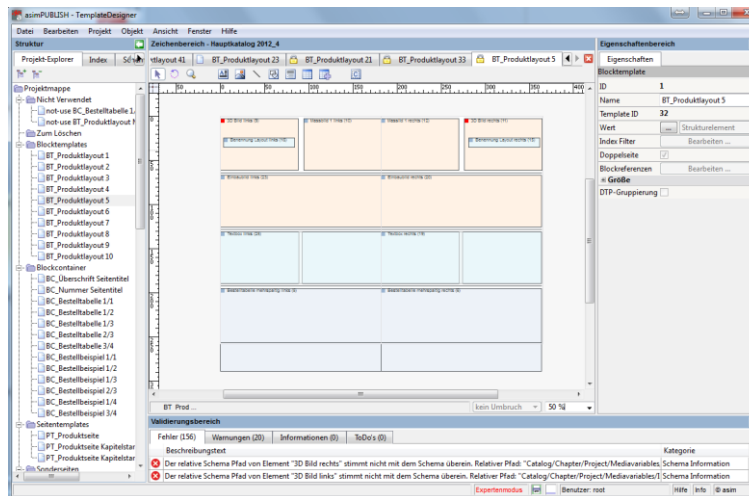
- Various catalog structures and catalogs via dragndrop can be generated
- Allocation of unchangable pages
- Values can be modified
- Export in different languages
- Tabular values can also be exported



Creating the print catalog

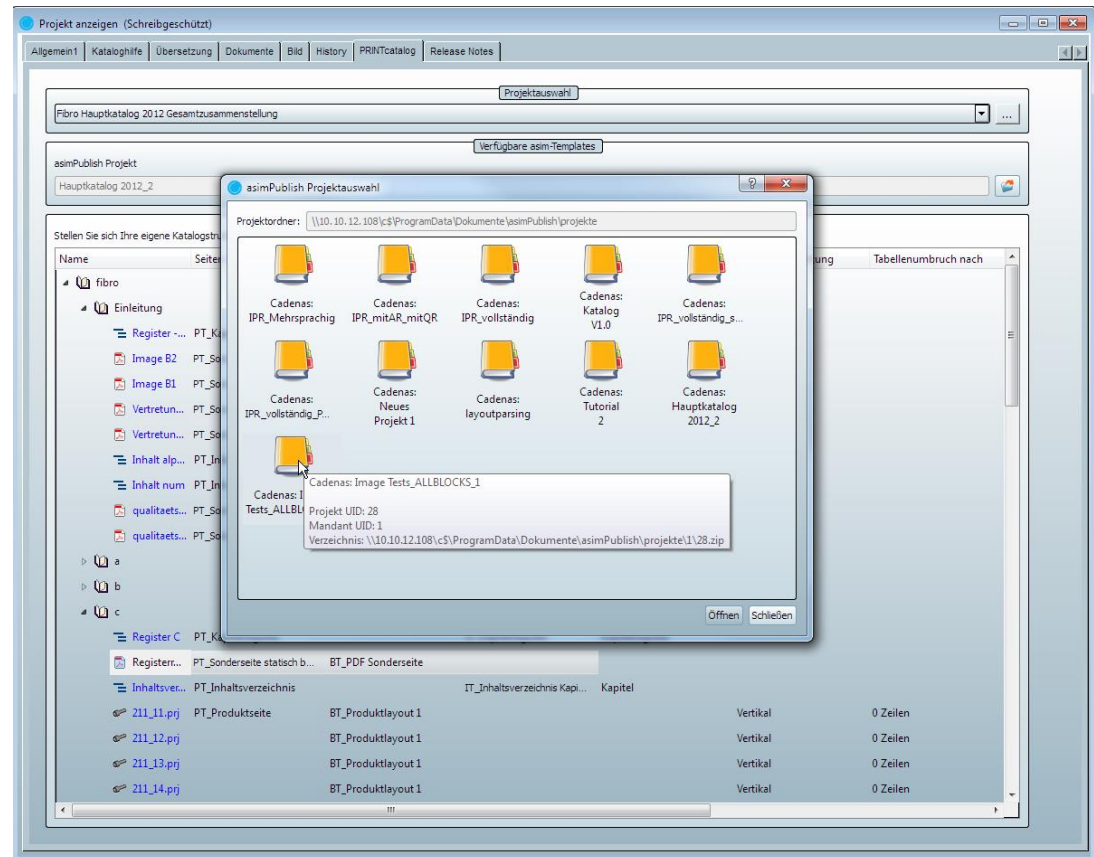
Creating the necessary templates.

- Nonrecurring creation
- Define colors, font, sizes, positions, etc.
- Templates for index, register, content
- Templates can be altered at any time
- In the run-up a strategy has to be considered how to structure the catalog in a sensible way



Creating the print catalog

- Preselection and reading out the templates directly in PARTproject
- Allocation of the templates
- Overwriting media data if necessary

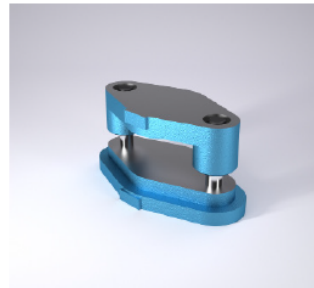


Indesign document and PDF

- Generate at the push of a button
- For print, CD and internet
- InDesign document alterable
- Content update possible

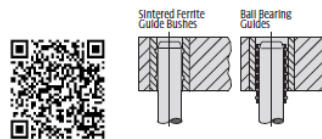
FIBRO

Die Sets DIN 9812 Type D/DG

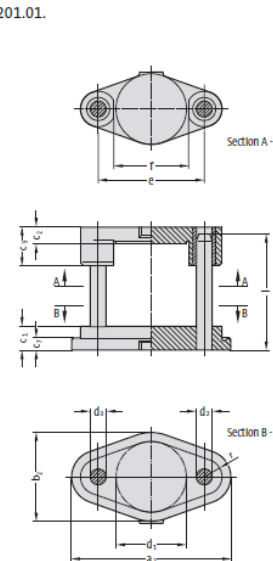
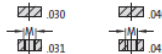


201.01.

Guide Elements



Order No (part ID)
Available without or
with shank thread
in top bolster



201.01. Die Sets DIN 9812 Type D/DG

Order No part 1*	d ₁	a ₂	b ₂	c ₂	C ₂	C ₃	C ₄	d ₂	d ₃	e	f	l	R	M
201.01.063	63	182	100	40	25	60	20	16	15	106	73	140	20	16x1.5
201.01.080	80	236	120	50	30	80	30	20	19	140	90	160	28	20x1.5
201.01.100	100	275	140	50	30	80	30	25	24	165	110	160	35	20x1.5
201.01.125	125	300	165	50	30	80	30	25	24	190	139	160	35	20x1.5
201.01.160	160	360	200	56	40	90	30	32	30	240	174	180	40	24x1.5
201.01.180	180	380	220	56	40	90	30	32	30	260	194	180	40	24x1.5
201.01.200	200	400	240	56	40	90	30	32	30	280	218	180	40	24x1.5
201.01.250	250	496	300	56	50	100	30	40	38	350	268	200	48	30x2
201.01.315	315	563	365	63	50	100	30	40	38	417	333	224	48	30x2

*stussnote_Text.

Ordering Code

Die Sets DIN 9812 Type D/DG	=	201.01
Work area D1	160 mm	= 160
Guide Elements FA	sintered ferrite	= 03
Shank thread ZG	without	= 0
Order No.		=>201.01.160.030

A4

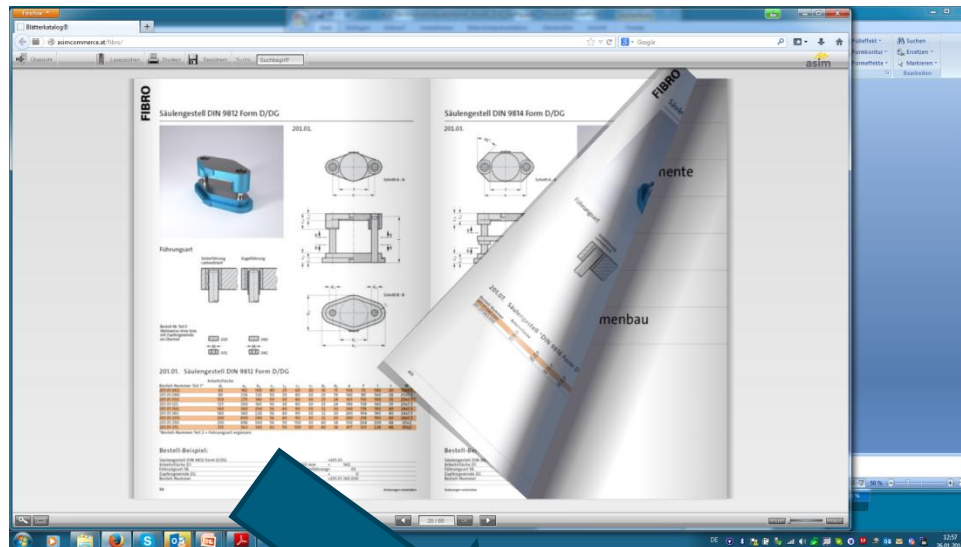
subject to alterations

Interactive flip catalog

eCATALOG
SOLUTIONS

ECATALOGSOLUTIONS –
FAR BEYOND CAD MODELS

- Turn the page just like paper
- Usual navigation
- Linking to directories possible
- One click and the part is directly opened in PARTcommunity
- Possible to jump to webshop

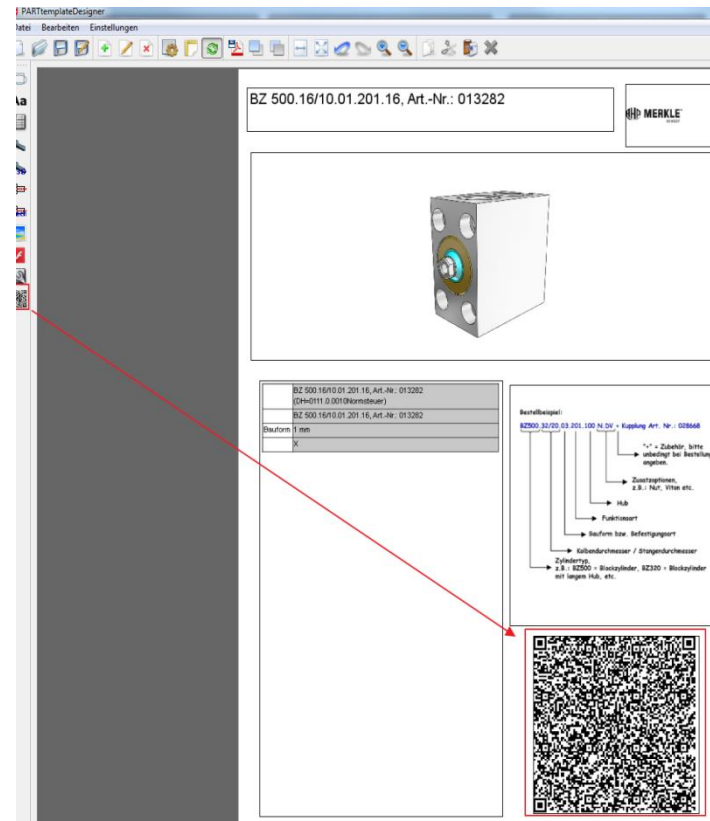


Name	Beschreibung	Wert
BOC	Kataloggröße	201_01_gd
D1	Achsbohrung	13 mm
EA	Führungsweg	Straßführung
ES	Zuführgerichte	ohne
SL	Säulenlänge	140,0 mm
A2	A2	100,0 mm
B2	B2	100,0 mm
C1	C1	40,0 mm
C2	C2	20,0 mm
C3	C3	40,0 mm
C4	C4	20,0 mm
D2	D2	10,0 mm
D3	D3	10,0 mm
E	E	100,0 mm
F	F	70,0 mm
R	R	20,0 mm



The print catalog becomes digital

- For mere data sheets in the 3D catalog there is the PDF template designer
- Also graphically oriented
- Uses the same contents
- PDF data sheets are generated in the web during runtime



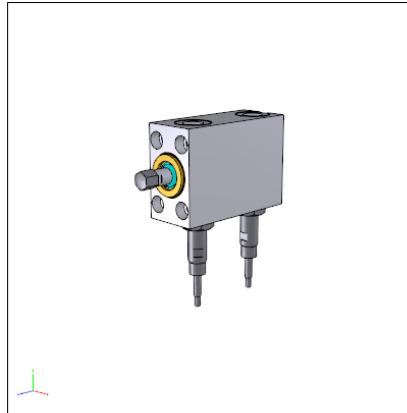
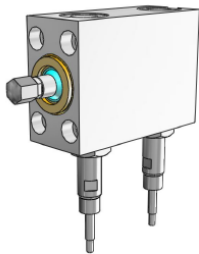
Example

Blockzylinder

BZ / BZN / MBZ / BZR / BZH / BRB



BZN 500.16/10.01.201.16.Z.N3+ Druckstück Rund Art. Nr.: 028678



AHP Merkle GmbH • Nikolausstr. 10 • 79188 Göttingen • Fon: +49 7052 470540 • Fax: +49 7052 4705-58 • info@merkle.de • www.merkle.de

Blockzylinder

BZ / BZN / MBZ / BZR / BZH / BRB

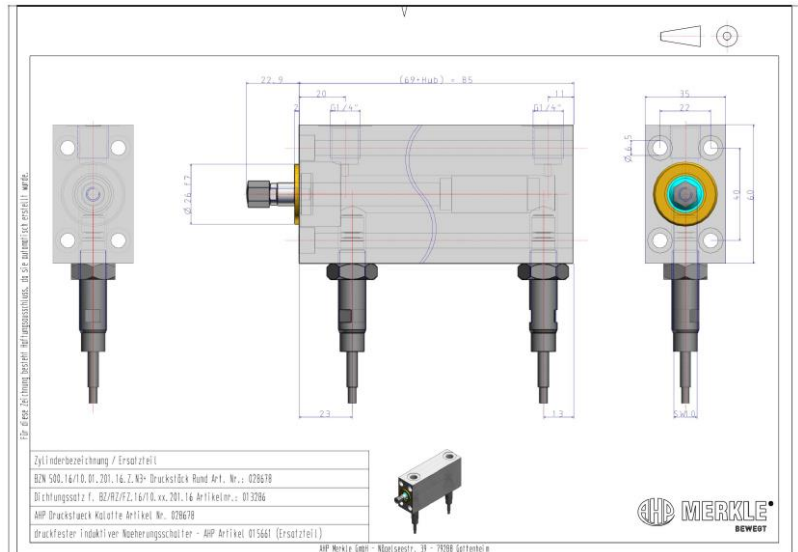


Parameter

Kolbendurchmesser	16 mm
Stangendurchmesser	10 mm
Bauform	Bauform 01 - Senkung DIN912 vorne - Zolgewindeanschluss mm
Standard / Sonder	Normhub
Hub	16 mm
Dargestellter Hub	6,9 mm
Funktionsart	Standard doppelwirkend (201)
Dichtungsauswahl	Standardsichtung
Kolbenstangenauswahl	ohne durchgehender Orange mm
Schalter	mit druckfesten induktiven Näherungsschaltern (BZN)
weitere Schalterglocken	mit eingegossenem Kabel (N3)
keil / Zentrierband	mit Zentrierband (Z)
Nutabstand	0 mm
Zubehör	Mit Druckstück B
Druckvolumen einfahren	3,2 cm³
Ölvolumen einfahren	2 cm³

Bill of material

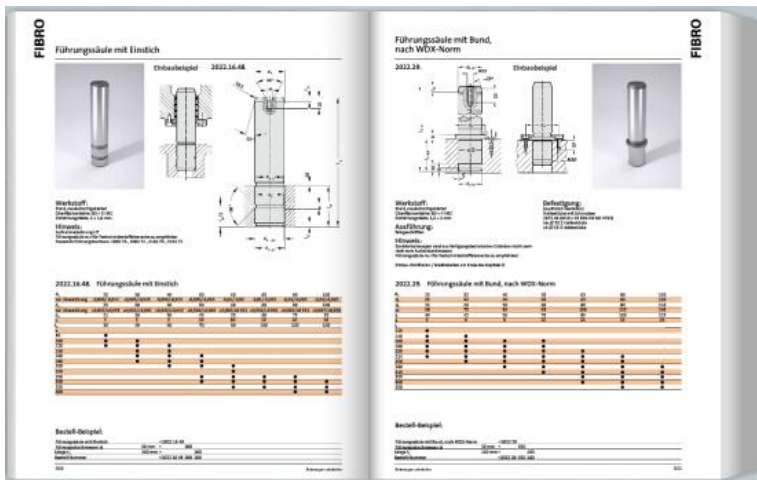
Description	Amount
BZN 500.16/10.01.201.16.Z.N3+ Druckstück Rund Art. Nr.: 028678	1
Dichtungssatz f. BZ/RZ/FZ/16/10.xx.201.16 Artikelnr.: 013286	1
AHP Druckstück Kalotte Artikel Nr. 028678	1
druckfester induktiver Näherungsschalter - AHP Artikel 015661 (Ersatzteil)	1





Print & Web Classical results

Classical results of the CADENAS print solution



Print



Online





Print & Web

Media data for the web

eCATALOG
SOLUTIONS

ECATALOGSOLUTIONS –
FAR BEYOND CAD MODELS

- Other “media“ of the CADENAS print solution

Product pictures

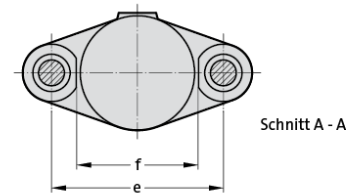
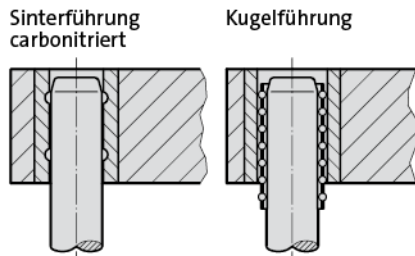




Other "media" of the CADENAS print solution

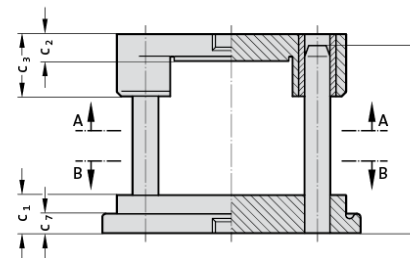
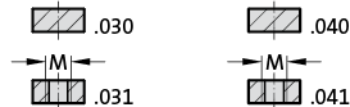
Führungsart

201.01.

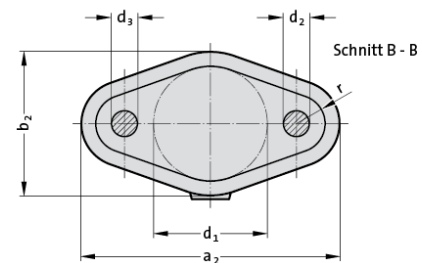


Schnitt A - A

Bestell-Nr. Teil II
Wahlweise ohne bzw.
mit Zapfengewinde
im Oberteil



Drawings



Schnitt B - B



Print & Web

Media data for the web

- Export all media automatically from MediaDB!
- Interpret HMTL, CSS via Plug-IN per XML.



20101.html



20101.css

FLURO® - Gelenklager GmbH

Suchbegriff
 Umschlüsselung

Startseite Über uns Produkte Neuigkeiten Anfrage Kataloge Jobs Kontakte Datenschutz Kundenlogin

Gelenkköpfe Maßreihe K - Standard

GI
 Serie
 Gelenkkopf mit Innengewinde aus Automaten- oder Vergütungsstahl, verzinkt, über Trichterschmiernippel im Gehäuse nachschmierbar.

Besonders für axiale Belastungen geeignet.

Größe (D)	B	M	A	F	L	K	J	O	SW	G	GL	statische Tragzahl C _{0 kN}	dynamische Tragzahl C kN	zulässige Drehzahl U/min	Stückgewicht g
5	8	6,00	18	27	36	11	9,0	7,7	9	M 5	10	9,9	2,5	900	18
6	9	6,75	20	30	40	13	10,0	8,9	11	M 6	12	11,9	3,2	760	27
8	12	9,00	24	36	48	16	12,5	10,4	13	M 8	16	17,1	5,4	620	46
10	14	10,50	28	43	57	19	15,0	12,9	17	M 10	20	21,4	7,5	500	76
12	16	12,00	32	50	66	22	17,5	15,4	19	M 12	22	27,0	10,0	450	115
14	18	13,50	36	57	75	25	20,0	16,8	22	M 14	25	24,5	13,0	360	170

Startseite - Produkte © 2013 FLURO® - Gelenklager GmbH Impressum





Print & Web

Existing web sites

Integration in existing web sites

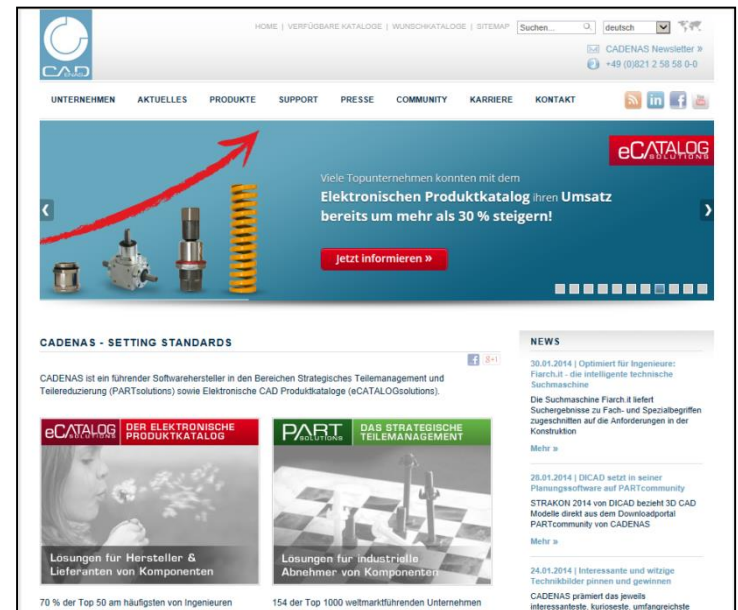
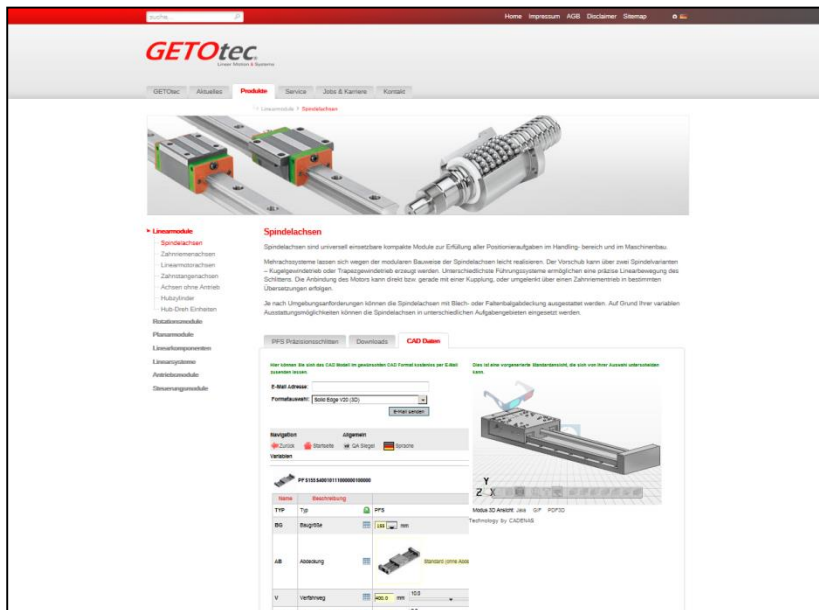
The screenshot shows the website for KSM PREISSER, a company specializing in construction, software, and metrology. The main navigation bar includes categories like 'Handmesstechnik', 'Tischmessgeräte', and 'Messnormelemente'. A search bar is present with a 'Go' button. The current page is titled 'Messnormelemente' and features a sub-section for 'Funktionselemente'. A product listing for '0320.04 Klemmschraube' is shown, with a detailed view of the screw. The product description reads: 'Klemmschraube K6, zum sicheren Fixieren der Klemmhülse K7...'. The page also includes a sidebar with 'Informationen', 'Mehr über...', 'Sonstiges', and 'Sicher Bezahlen' sections. The 'Sicher Bezahlen' section features a 'SOFORT ÜBERWEISUNG' banner and logos for TÜV SAARLAND. The bottom of the page shows a 'Messschlitten für Außenantastung MS 20-AF'.



Print & Web

New web sites

- Utilization for new web sites with e.g. CMS Contao
- New CANVAS offer – Based on Contao





Print & Web

CMS Contao - benefits

Benefits of CANVAS services based on Contao

- Intuitive, clear and structured backend user interface
- Editors do not need HTML or programming skills
- Fast training for newcomers
- Search engine friendly URLs, standard compliant HTML5 code
- Flexible user and rights administration
- Multi-lingual
- Integrated data management
- Multitude of extensions available
- Individual adaption (optical & functional) according to customer demands possible

- Embedded the evolution by **CADENAS**
 - Available starting at **PARTcommunity 2.2**
 - No change of system necessary
 - Direct & simple integration into homepage with links
- ⇒ First customers are already confirming an increase of the downloads!!!

GETotec
www.getotec.de

GETotec Aktuelles **Produkte** Service Jobs & Karriere Kontakt

Linienmodule **Spindelachsen**

Spindelachsen

Spindelachsen sind universell einsetzbare kompakte Module zur Erfüllung aller Positionieraufgaben im Handlungsbereich und im Maschinenbau. Mehrachsensysteme lassen sich wegen der modularen Bauweise der Spindelachsen leicht realisieren. Der Vorschub kann über zwei Spindelvarianten – Kugelgewindetrieb oder Trapezgewindetrieb erzeugt werden. Unterschiedliche Führungs-systeme ermöglichen eine präzise Linearbewegung des Schlittens. Die Anbindung des Motors kann direkt bzw. gerade mit einer Kupplung, oder umgelenkt über einen Zahnriementrieb in bestimmten Übersetzungen erfolgen.

Je nach Umgebungsanforderungen können die Spindelachsen mit Blech- oder Falterbalgabdeckung ausgestattet werden. Auf Grund ihrer variablen Ausstattungs-möglichkeiten können die Spindelachsen in unterschiedlichen Aufgabengebieten eingesetzt werden.

PF3 Präzisionsachsen Downloads **CAD Daten**

Hier können Sie sich das CAD-Modell im gewünschten CAD-Format kostenlos per E-Mail zusenden lassen.

E-Mail-Adresse:

Formatauswahl:

Das ist eine vorgeschriebene Mindestanzahl, die sich von Ihrer Auswahl unterscheiden kann.

Navigation: Zurück Startseite CA-Signet Sprache

Variablen

PF 3155 3400101100000100000

Name	Beschreibung
Typ	Typ
BO	Baugröße
AB	Abdeckung
V	Verfahren

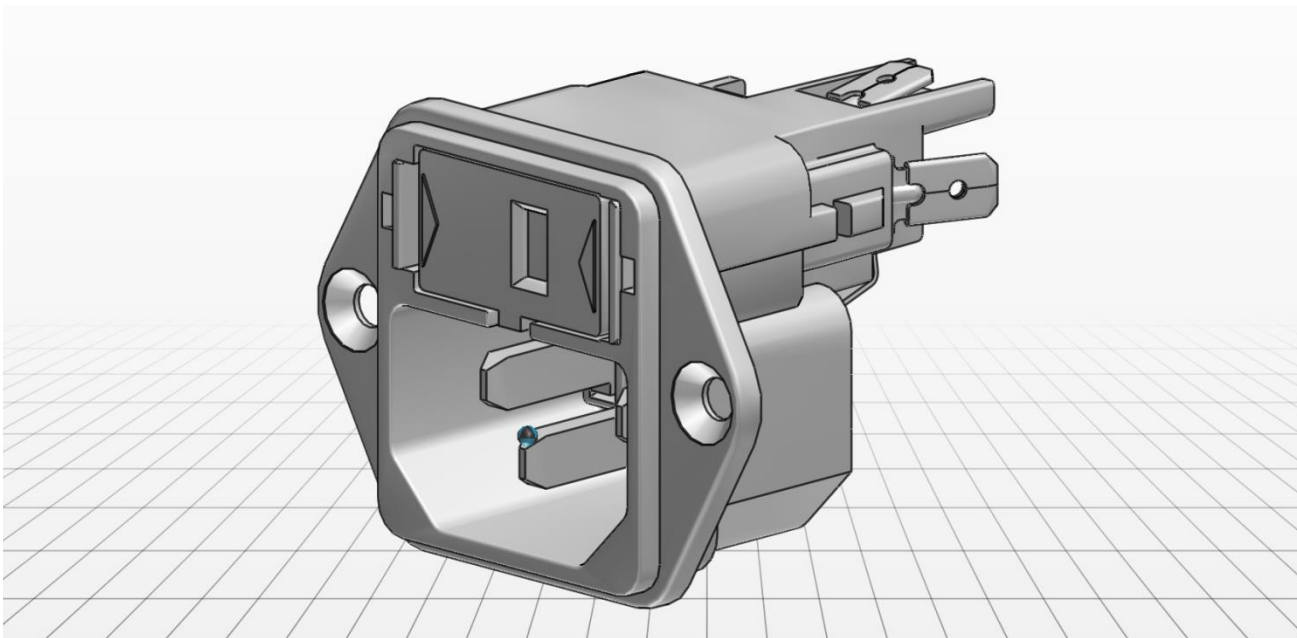
MMS 3D Ansicht: AXS GIP PCFD2
Technology by CADENAS



Print & Web

Embedded possibilities & outlook

- Components can be used individually, e.g. the Schurtner viewer
- Outlook for 2014-optional login





Ideas and possibilities

Competency on the Industry Forum

- **THE experts for CMS on the Industry Forum**



Mr. Meyer, CANVAS



Mrs. Döllner, CANVAS

Conclusion

- **Both print and web catalog can be compiled from one database**
- **Consistent use of data**
- **The catalog is not only available in paper but also via all current media channels**
- **The catalog is enriched with further functions**
- **Communication between 3D and technical information in both directions**
- **Easy to use for the customer as well as the sales department**



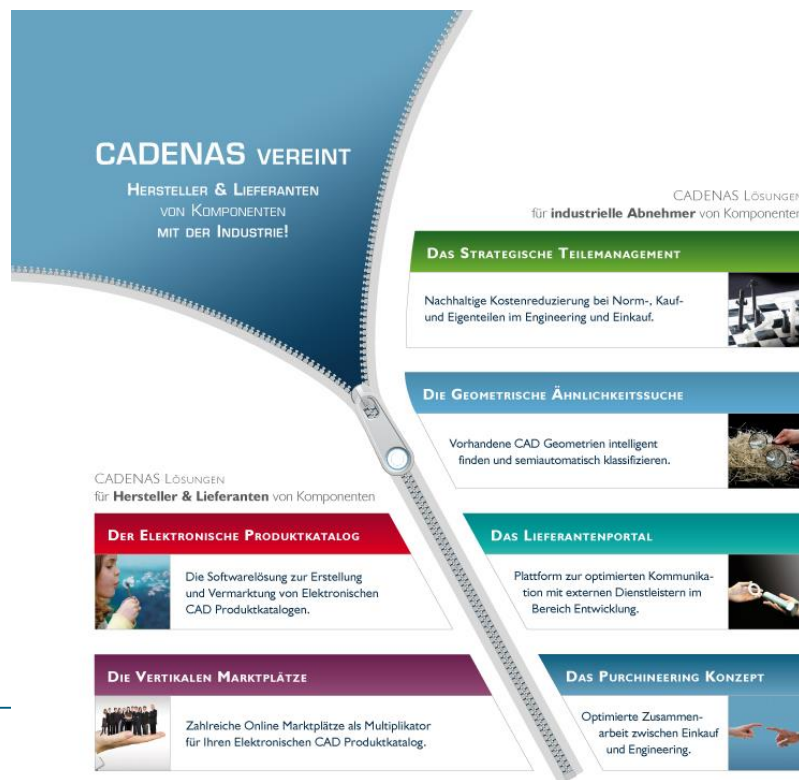


**Thank you
 very much
 for your attention!**
**QUESTIONS?
 FEEDBACK?**

**Dipl.-Ing. (FH) Andreas Höfig
 CADENAS Sales Representative**

**Thomas Lang
 Branch Manager Esslingen**

Phone.: +49 711 900 377 - 31
 Email: T.Lang@cadenas.de





Property, Copyright and Disclaimer

This document and all information it contains are the property of the CADENAS AG. Delivery of this document or display of its content does not create a right to the intellectual property. This document may not be copied or made available to third parties without the written consent of the CADENAS AG. This document and its content may only be used for the purposes it was intended for.

All statements made in this document are not an offer. They were made bona fide on the basis of specified assumptions. If the reasons for the statements are not indicated, the CADENAS AG will gladly explain the statements to you