

Univer S.p.A. Milan (Italy)
Pneumatic and Systems Division
presents

**“Product Libraries
Neutral and customizable
downloaded from web
realized
in collaboration with Cadenas AG”**

Edit by : Paolo Fioroni - Responsible Technical Division

WHY: PRODUCT LIBRARIES

- Increase and enrich the customers service

THE GLOBAL MARKET HAS DEFINITELY ELECTED THE SERVICE ,AS ONE OF THE BASIC COMPONENTS FOR THE SALE, OF THE PRODUCT AND OF THE CUSTOMER SATISFACTION.

- Continuity projected towards the future

UNIVER, SINCE 30 YEARS IN THE FIELD OF THE INDUSTRIAL AUTOMATION, CONTINUES TO BELIEVE FIRMLY IN THE OWN PRODUCT, AND CONSEQUENTLY INVESTS ON IT, BY ADOPTING THE NEW TECHNOLOGIES OF THE THIRD MILLENNIUM.

WHY: PRODUCT LIBRARIES

- Spirit of improvement and competition

UNIVER WANTS TO REMAIN LEADER IN ITALIAN MARKET ALSO IN THE FUTURE, AND TO MAINTAIN A RESPECTABLE POSITION IN THE AUTOMATION WORLDWIDE MARKET (AS LONG AS POSSIBLE), BY CONTINUOUS TECHNOLOGICAL INVESTMENTS LIKE “E-CATALOG”

WHY: NEUTRAL CUSTOMIZABLE

- Sensitiveness towards the new design and construction technologies

RESEARCH AND DEVELOPMENT OF THE NEW PRODUCTS / REQUIRE, MORE AND MORE MODULAR AND TRIDIMENSIONAL SUPPORT, REALIZATION IN ORDER TO REDUCE WORKING TIME AND POSSIBILITY OF ERRORS.

WHY: NEUTRAL CUSTOMIZABLE

- Neutral and customizable directly by the customer

THE ALWAYS INCREASING SPECIFIC TYPES OF SOFTWARE FOR DESIGN AND CONSTRUCTION, WOULD NEED UNLIMITED ECONOMICAL AND HUMAN RESOURCES, IN ORDER TO CREATE NUMBERLESS COPIES OF THE SAME PRODUCT, IN THE ENORMOUS QUANTITY OF DIFFERENT LANGUAGES USED BY THE CUSTOMERS.

CADENAS NEUTRAL SOFTWARE, LIGHT AND EASY TO TRANSLATE ON ALL MOST IMPORTANT 3D CAD LANGUAGES, HAS SOLVED THIS PROBLEM.

WHY ON WEB

- Visibility and accessibility worldwide

THE PRESENCE ON WEB IS SYNONYMOUS OF HIGH VISIBILITY AND PUBLICITY AT LOW COST.

- Quick implementation and modernization

IT IS POSSIBLE TO INCREMENT, MODIFY, UPDATE AND MAKE AVAILABLE WORLDWIDE THE ALL PRODUCT RANGE, WITHIN AN EXTREMELY SHORT TIME, AND AT EXTREMELY LOW COST COMPARED TO THE OLD CD, FLOPPY DISKS AND PAPPER CATALOGUES.

WHY ON WEB

- Easy and quick consultation and download

GUIDE ON LINE IN THE DIFFERENT LANGUAGES, MAKES USE AND COMPREHENSION OF E-CATALOG VERY SIMPLY AND FAST, AT ALL USERS.

CHOSEN THE PRODUCT, AND FILL IN THE FORM WITH THE COMPANY DATA, FOR A CORRECT DELIVERY OF THE REQUEST FILES, IN TEN MINUTS CADENAS WILL SEND BACK TO THE CLIENT, AN E-MAIL CONTAINING THE FILES (ZIPPED) OF THE REQUESTED PRODUCT IN THE DESIRED FORMAT.

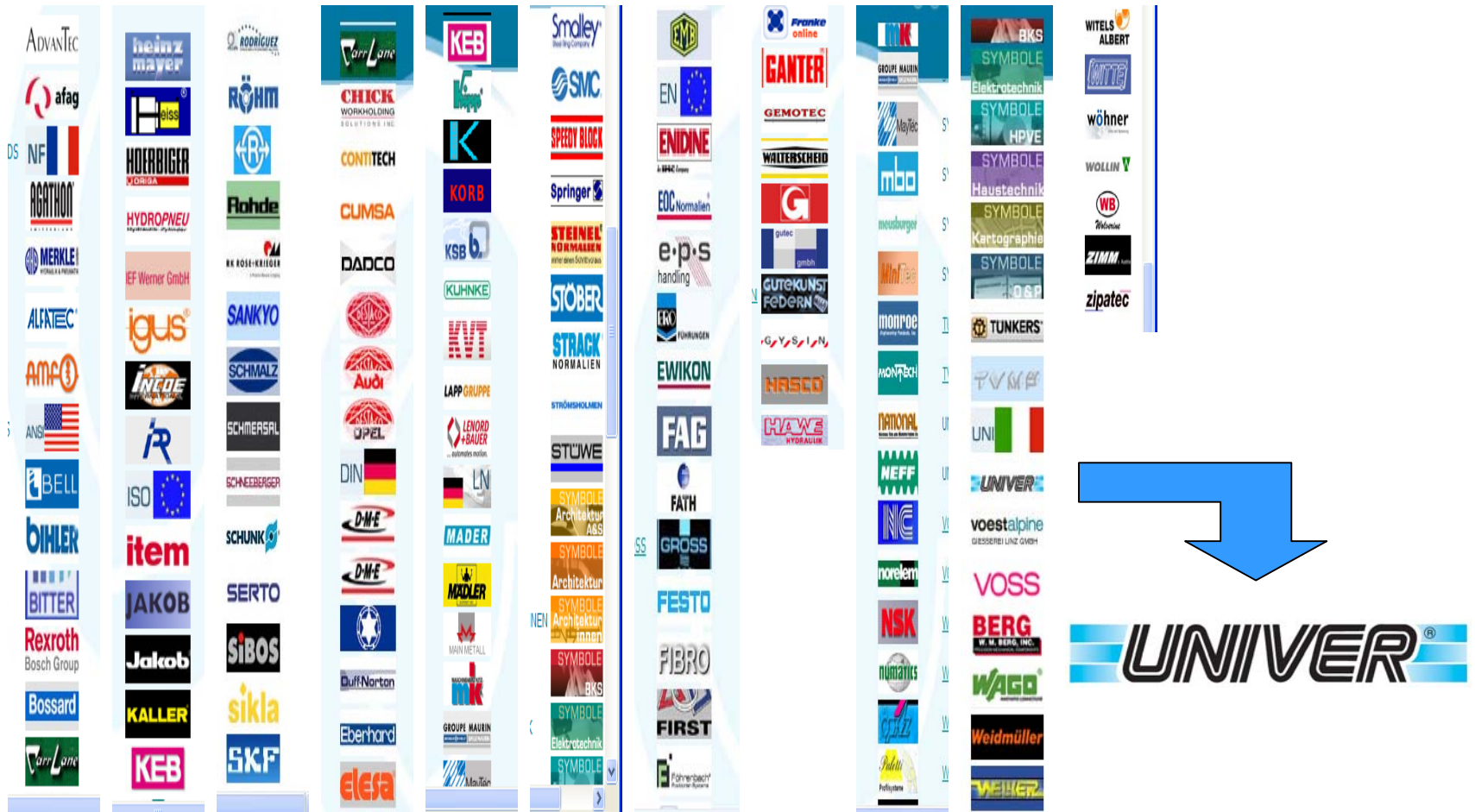
WHY: WITH CADENAS

- Knowledge of the industrial automation sector

CADENAS IS ALREADY THE PARTNER OF OTHER BIG INTERNATIONAL COMPANY IN THE SECTOR OF THE INDUSTRIAL AUTOMATION: FESTO, BOSCH, ORIGA, NUMATICS, DESTACO, TUNKERS ETC.:, THEREFORE CADENAS, KNOW VERY WELL THE REQUIREMENTS OF THE COMPANIES INVOLVED IN THIS FIELD.

WHY WITH CADENAS

- Knowledge of the automation sector



WHY WITH CADENAS

- Professional technical knowledge & human resources

FROM THE FIRST CONTACT, CADENAS MANAGEMENT TOGETHER TO TECHNICAL RESOURCES, HAVE SHOWN HIGH COMPETENCE IN SECTOR AND GREAT HUMAN AVAILABILITY

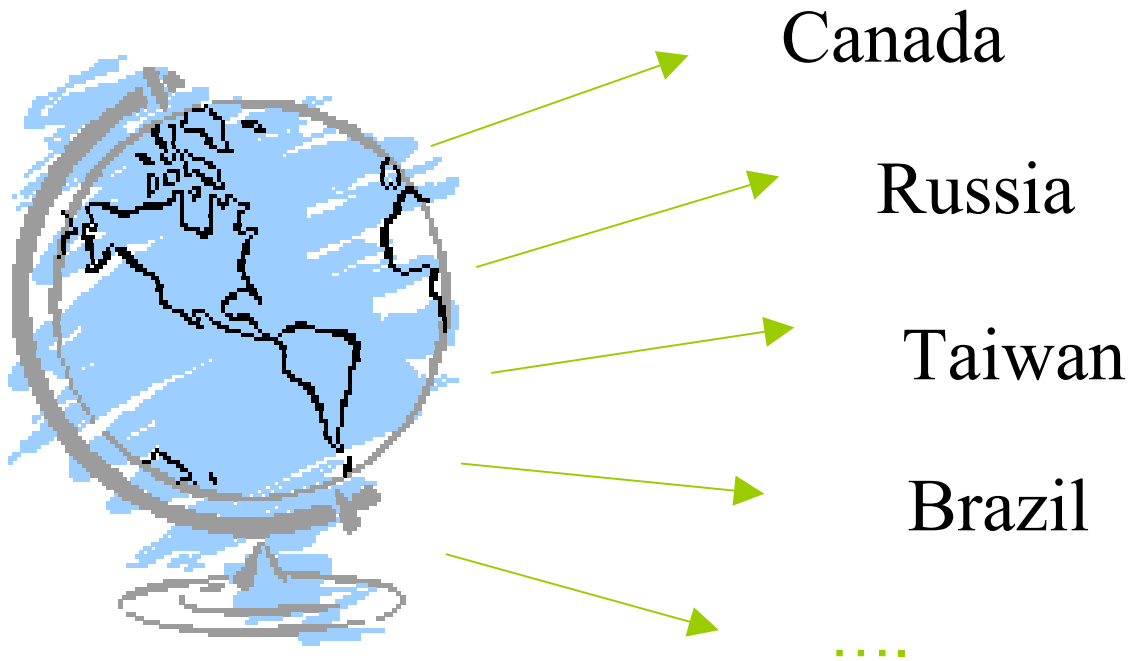
- Supporting service

CADENAS AG OFFERS A GREAT AND COMPLETE RANGE OF SERVICES RELATIVE TO:

- TECHNICAL SUPPORT.
- MARKETING SUPPORT
- STATISTICS TOOLS
- PUBLICITY SUPPORT

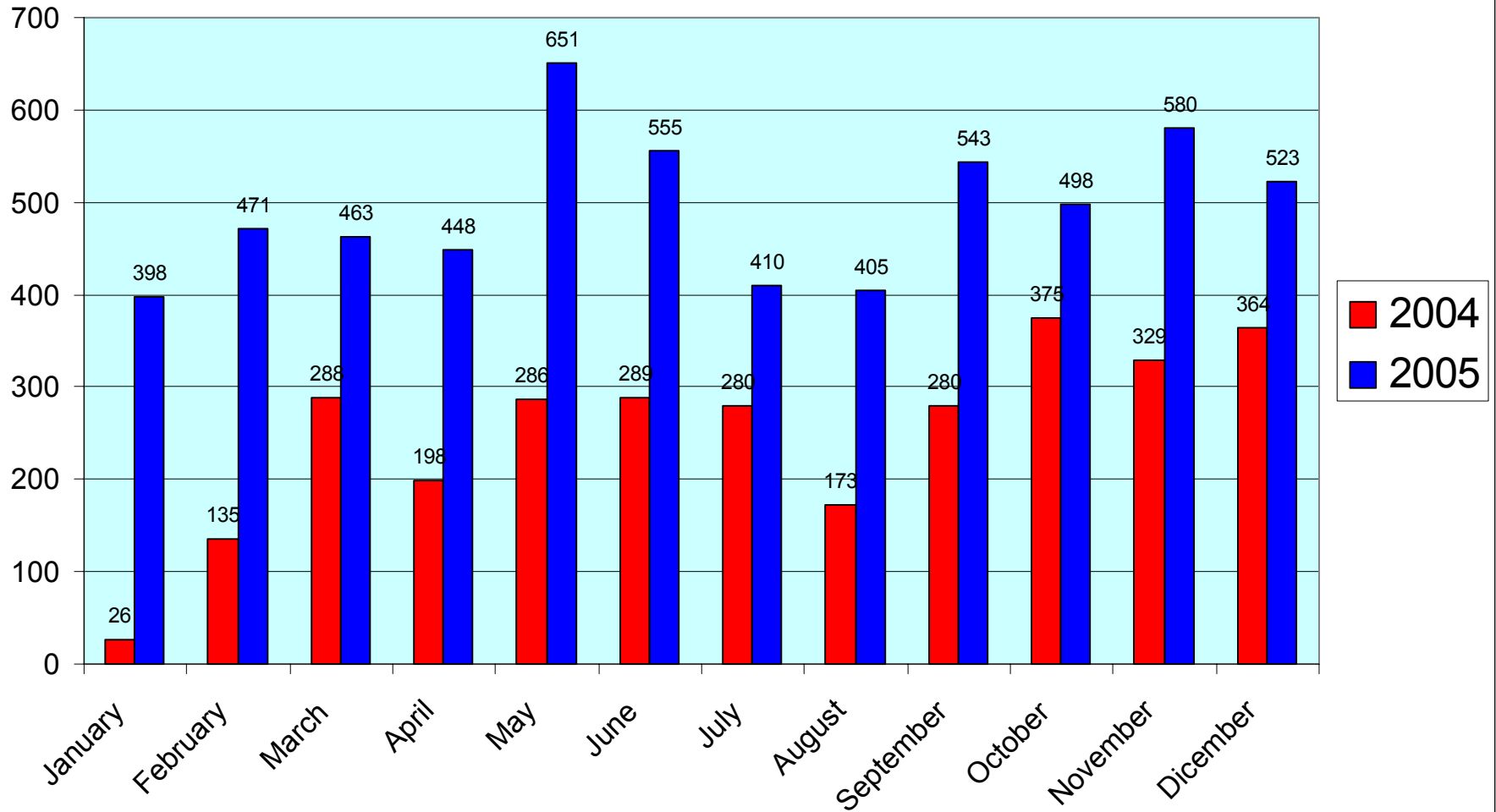
(CD,FLOPPY,ARTICLES ON SPECIALIZED MAGAZINES)

THE RESULTS

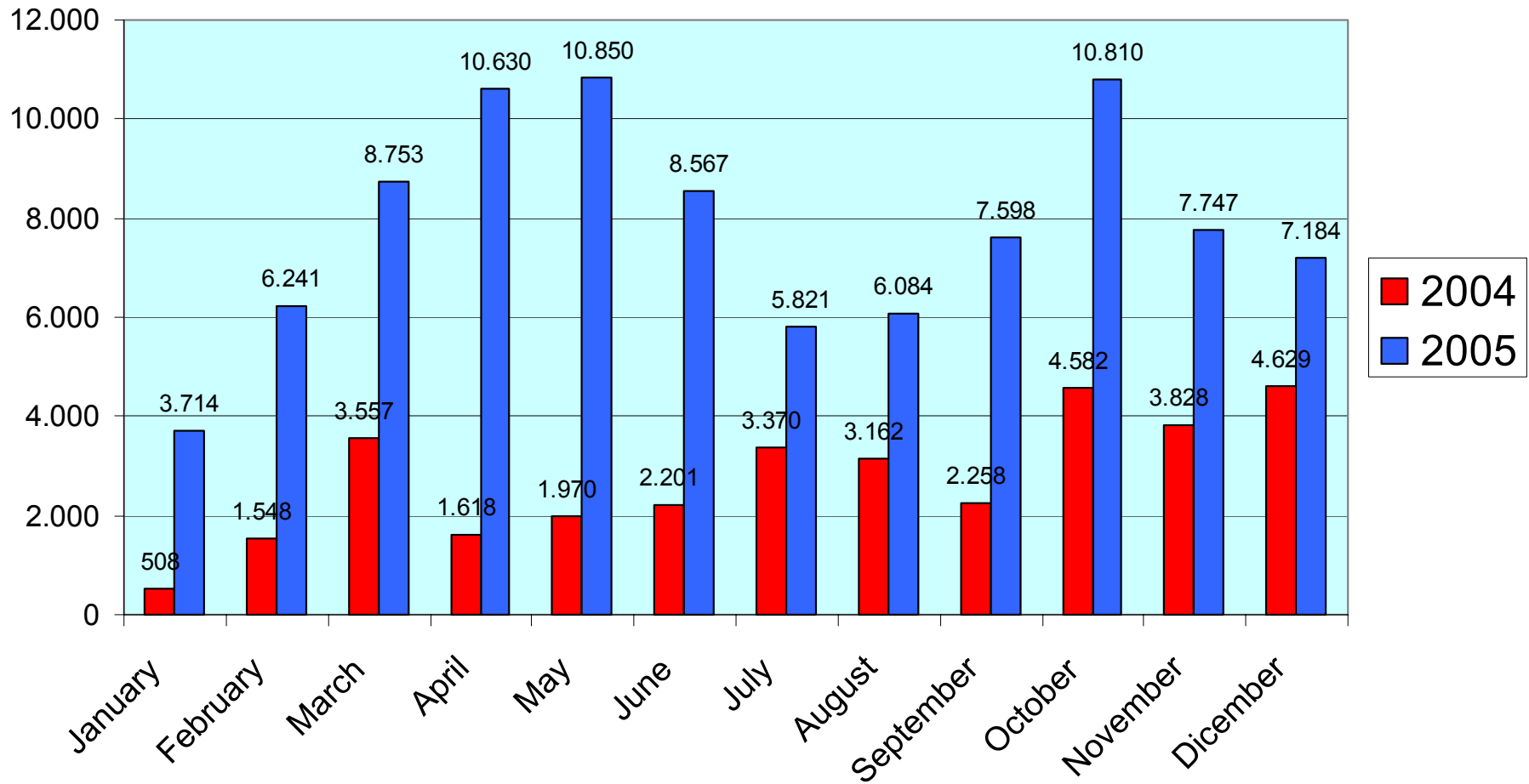


EACH MONTH, AND FROM ANY PART OF WORLD ,WE HAVE GOT A GREAT QUANTITY OF CONTACTS AND DOWNLOADS.

Number of Contacts 2004/2005



Number of downloaded files 2004/2005

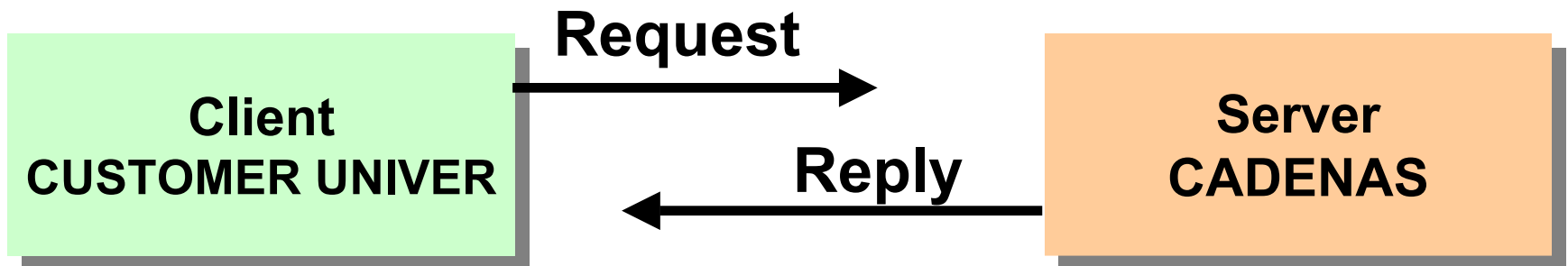


WAY OF WORK

- The structure of service is based on “Client /Service” hierarchy

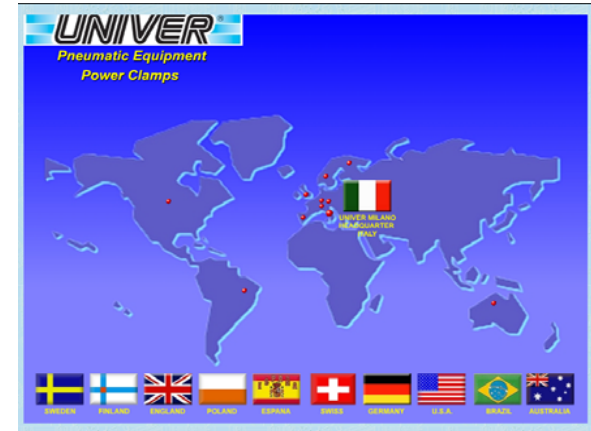
“SERVER” IS A COMPUTER ABLE TO SAVE A LARGE NUMBER OF INFORMATION WHICH CAN BE TRASFERRED TO OTHER COMPUTER CALLED “CLIENT”.

“CLIENT” IS A COMPUTER ABLE TO RECEIVE THE INFORMATION SAVED IN THE “SERVER” AFTER HAVING SENT A SPECIFIC REQUEST.



How to USE it

- Enter the UNIVER site
www.univer-group.com
- Click on
the CADENAS logo




How to USE it

Fill in the identification area “Customer” with the company data for a correct delivery of the requested files.

PARTserver Setup


Ditta	<input type="text"/>	e-mail	<input type="text"/>
Nome	<input type="text"/>	Cognome	<input type="text"/>
street	<input type="text"/>		
CAP	<input type="text"/>	Citta	<input type="text"/>
Paese	[no country] <input type="button" value="v"/>	state	<input type="text"/>
Tel.	<input type="text"/>	Fax	<input type="text"/>
max.:	<input type="text"/> KB per e-mail	part system in use	<input type="button" value="v"/>

Campi obbligatori



PARTserver@cadenas.de

- ✓ Formato CAD disponibile Opzioni
- ✓ Formato CAD in lavorazione Istruzioni
- ✗ Formato CAD non disponibile Scarica
- Macro/Script



How to USE it

- Choose the type of the requested “files” and click ok

Neutro		Nativo	
2D	3D	2D	3D
✓ BMP <input type="checkbox"/>	✓ CIP <input type="checkbox"/>	✓ AutoCAD <u>0?</u> <input type="checkbox"/> >=V14	✓ 3D Studio MAX <input type="checkbox"/>
✓ DWF <u>0</u> <input type="checkbox"/> ASCII	✓ DWG <u>?</u> <input type="checkbox"/> >=V14	✓ Cadkey CDL <u>? M</u> <input type="checkbox"/> >=V19	✓ AutoCAD <u>?</u> <input type="checkbox"/> >=V14
✓ DWF <u>0</u> <input type="checkbox"/> Binary	✓ DXF <u>?</u> <input type="checkbox"/> V12	✓ Catia IUA <u>? M</u> <input type="checkbox"/> V4	✓ Caddy++ <input type="checkbox"/> SAT-V4.2
✓ DWF <u>0</u> <input type="checkbox"/> Compressed	✓ IGES <input type="checkbox"/>	✓ HP ME 10 <u>0</u> <input type="checkbox"/> >=V9	✓ Catia <u>? M</u> <input type="checkbox"/> >=V5
✓ DWG <u>0?</u> <input type="checkbox"/> >=V14	✓ Metafile 3D <input type="checkbox"/> V2	✓ IDF <input type="checkbox"/> 3.0	✓ Catia IUA <u>? M</u> <input type="checkbox"/> V4
✓ DXF <u>0?</u> <input type="checkbox"/> V12	✓ Parasolid <input type="checkbox"/> Binary	✓ IDF <input type="checkbox"/> 4.0	✓ EAI <input type="checkbox"/>
✓ DXF <u>0?</u> <input type="checkbox"/> V9	✓ Parasolid <input type="checkbox"/> Text	✓ I-DEAS <u>? M</u> <input type="checkbox"/> >=V7	✓ I-DEAS <u>? M</u> <input type="checkbox"/> V7
✓ HPGL <u>0</u> <input type="checkbox"/> V2	✓ SAT <input type="checkbox"/> V2.0	✗ LogoCAD <input type="checkbox"/>	✓ I-DEAS <u>? M</u> <input type="checkbox"/> V9
✓ IGES <input type="checkbox"/> >=V5.0	✓ SAT <input type="checkbox"/> V2.1	✓ Medusa <u>? M</u> <input type="checkbox"/> >=2000i	✓ Intergraph EMS <input type="checkbox"/>
✓ JPEG <input type="checkbox"/>	✓ SAT <input type="checkbox"/> V3.0	✓ MegaCAD <input type="checkbox"/> >=V5	✓ Inventor <u>? M</u> <input type="checkbox"/> >=R5.3
✓ Metafile 2D <input type="checkbox"/> V1	✓ SAT <input type="checkbox"/> V4.0	✓ SolidEdge <input type="checkbox"/> >=V12	✗ LogoCAD <input type="checkbox"/>
✓ Metafile 2D <input type="checkbox"/> V2	✓ SAT <input type="checkbox"/> V5.0	✓ Unigraphics <input type="checkbox"/> >=NX V1.0	✓ Mechanical Desktop <u>? M</u> <input type="checkbox"/> >=V5
✓ MI <input type="checkbox"/> >=V8	✓ SAT <input type="checkbox"/> V5.3	✗ VisiCAD <input type="checkbox"/>	✓ MegaCAD <input type="checkbox"/> SAT-V2.0
✓ Postscript EPS <input type="checkbox"/>	✓ SAT <input type="checkbox"/> V6.0	✓ VX (Varimetrix) <u>?</u> <input type="checkbox"/> >=V5.0	✓ Pro/E <input type="checkbox"/> >=2000i2
✓ SVG <input type="checkbox"/>	✓ STEP <input type="checkbox"/> AP203		✓ PRO-Desktop <u>M</u> <input type="checkbox"/>
✓ TIFF <input type="checkbox"/>	✓ STEP <input type="checkbox"/> AP214a		✓ SolidDesigner (LSP) <u>? M</u> <input type="checkbox"/> >=V7.5
	✓ STEP <input type="checkbox"/> AP214b		✓ SolidEdge <input type="checkbox"/> >=V12
	✓ STL <input type="checkbox"/>		✓ SolidWorks <u>? M</u> <input type="checkbox"/> >=2001+
	✓ VRML <input type="checkbox"/> >= V1.0		✓ TopSolid <input type="checkbox"/> >= 6.5.25
	✓ XGL <input type="checkbox"/>		✓ Unigraphics <input type="checkbox"/> >=NX V1
			✓ VisiCad <u>?</u> <input type="checkbox"/>
			✓ VX (Varimetrix) <u>?</u> <input type="checkbox"/> >=V5.0

- 16 types 2D neutral
- 21 types 3D natural

- 12 types 2D native
- 21 types 3D native

How to USE it

- In the “Catalogue 3D Univer” click on Microcylinders

The screenshot displays the UNIVER Power Clamps Division website interface. At the top left is the UNIVER logo. To its right is a vertical 'CAD-FORMATS' menu. Further right is a four-step process: 1. Def. formati CAD, 2. Seleziona le parti, 3. Mostra il cestino delle parti, 4. Spedisci. Below this are icons for 'Sfoggia' (a cylinder), 'Mostra il cestino delle parti ordinate' (a shopping cart), 'Aiuto' (a lightbulb), and the PART SERVER logo with copyright information (© 1992-2003 PARTsolutions).

The main content area features a 'Cylinders' sidebar on the left with a search bar and a list of products including Microcylinders, Cylinders Ø32-200 mm, Rotating pneumatic cylinders, Compact cylinders UNITOP, Compact cylinders STRONG, 2 or 3-stage telescopic pneumatic cylinders, Short-stroke cylinders, and Oval cylinders. The main content area has a 'PART SERVER interested?' banner, a 'Mostra le immagini' checkbox, a 'last Login: ---:--' indicator, and a 'Sommarrio' section with links for 'Sfoggia', 'Mostra il cestino delle parti ordinate', 'Aiuto', and 'Ricerca parti'.

How to USE it

- In the “Catalogue 3D Micro & Accessories” click on Microcylinders

The screenshot displays the UNIVER PARTSERVER website interface. At the top left is the UNIVER Power Clamps Division logo. A 'SETUP' menu is visible with four options: '1. Def. formati CAD', '2. Seleziona le parti', '3. Mostra il cestino delle parti', and '4. Spedisci'. To the right are three icons: a microcylinder labeled 'Sfoggia', a shopping cart labeled 'Mostra il cestino delle parti ordinate', and a lightbulb labeled 'Aiuto'. The PARTSERVER logo and copyright information (© 1992-2003 PARTsolutions) are in the top right.

The main content area features a search bar with a magnifying glass icon and a 'Mostra le immagini' checkbox. Below the search bar are three product categories: 'Accessori' (dated 26.09.2003) and 'Microcilindro' (dated 26.09.2003). A large blue banner reads 'PARTSERVER Partserver has an advertising space for you.' Below this is a 'Sommarrio' section with three items: 'Sfoggia' (with a microcylinder icon), 'Mostra il cestino delle parti ordinate' (with a shopping cart icon), and 'Aiuto' (with a lightbulb icon). A fourth item, 'Ricerca parti' (with a magnifying glass icon), is partially visible at the bottom.

How to USE it

- In the “Catalogue Microcylinders” click on the Type

UNIVER Power Clamps Division

SETUP

- 1. Def. formati CAD
- 2. Seleziona le parti
- 3. Mostra il cestino delle parti
- 4. Spedisci

Sfogli

Mostra il cestino delle parti ordinate

Aiuto

PARTSERVER © 1992-2003 PARTsolutions

Cylinders/Microcylinders Ø8÷25 mm

Mostra le immagini

PARTSERVER Partserver has an advertising space for you.

Cylinders/Microcylinders Ø8÷25 mm

M / Microcilindro 2D/3D

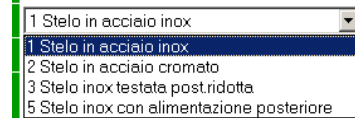
3D-Preview

Nr	Name
1	M 1 0 0-08-0010- F--[0]
2	M 1 0 0-010-0010- F--[0]
3	M 1 0 0-012-0010- F--[0]
4	M 1 0 0-016-0010- F--[0]
5	M 1 0 0-020-0010- F--[0]
6	M 1 0 0-025-0010- F--[0]

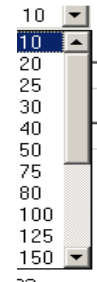
How to USE it

- Within the product family (Microcylinder) choose:

1) Type of piston rod

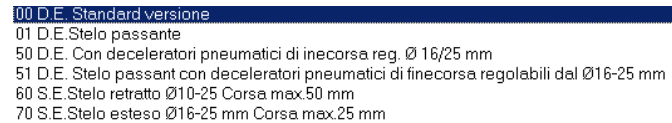


2) Bore size



3) Stroke

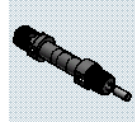
4) Type



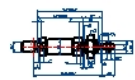
Nome	M 10 6 08 0010 F-01
Nome	M 10 6 08 0010 F-01
Sorte	SR M
Tipo	Stainless steel rod standard version
Tipo	TYP1 D.A. Standard version
Ø Alarggio (mm)	CYL 0
Corsa (mm)	HUR 10
Corsa di andata (mm)	HURST 0
Option (mm)	OPT F-For use with locking unit with "reduced dimensions"
Filetto (mm)	AM 12
Diametro (mm)	B 12
Ø Diametro (mm)	BA 0
Filetto	BE M12x1.25
Ø Diametro (mm)	CD 4
Diametro (mm)	D 9.3
Diametro (mm)	E 14.0
Distanza (mm)	E1 0.00
Distanza (mm)	E2 0.50
Filetto	EE M5x0.8
Ø13 Altezza (mm)	EW 0
Chiave (mm)	KV1 7
Distanza (mm)	F 5.0
Filetto	KK M4x0.7
Lunghezza (mm)	KW 7
Lunghezza (mm)	KW1 2.8
Distanza (mm)	L1 7
Distanza (mm)	L1 46
Distanza (mm)	L2 62
Distanza (mm)	L3 78
Diametro (mm)	MM 4
(mm)	MR 12
Chiave (mm)	SW 3
Distanza (mm)	VD 1.5
Distanza (mm)	WA 0.0
Distanza (mm)	WB 0.0
Distanza (mm)	WD 12
+1.2 Distanza (mm)	WF 16
+1 Distanza (mm)	XC 64



al cestino delle parti



3D-Preview



2D-Preview Vorderansicht

5) 2D PREVIEW



6) 3D PREVIEW



Once all parameters are defined, save the request by clicking. * (it is possible to request more parts with one only request)

what you obtain

The example shown what you obtain when opening a 3D file



- A native file according to the CAD system used by the customer.
- The file is created in a very short time.
- An always up-to-date file according to the last revision.
- A file complete of the working tree.
- A very light file.
- A completely modifiable file.
- Importable/exportable in other formats.
- A file which can be easily saved.
- A file which can be imported in a complete overall drawing.